



Price
£440,000

Freehold

4x  2x  2x 

**South Grove, Petworth,
West Sussex, GU28**

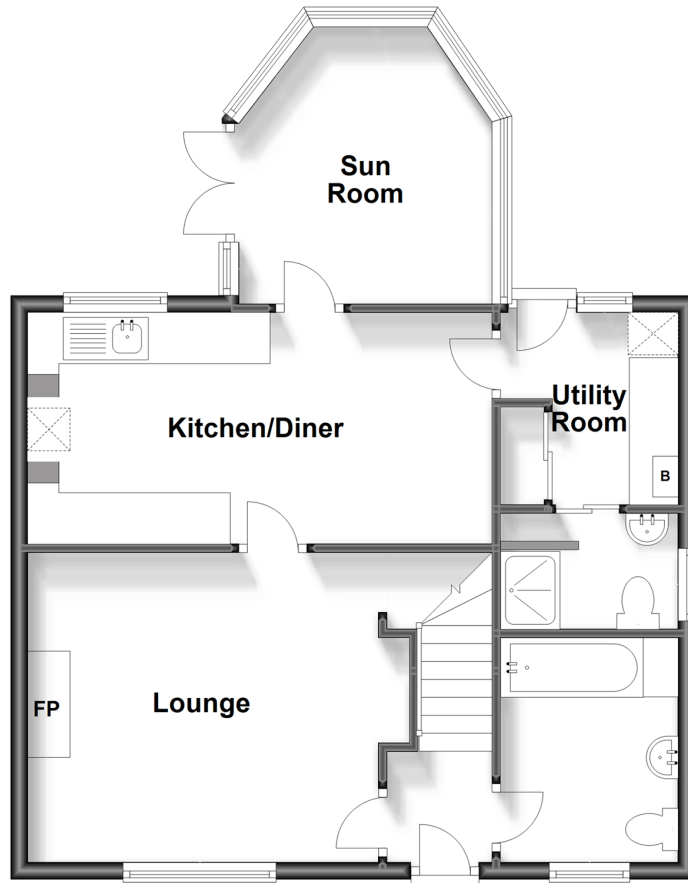
OVER 60?

Secure this property
for up to **59% less!**

cubitt&west
Helping you move forwards

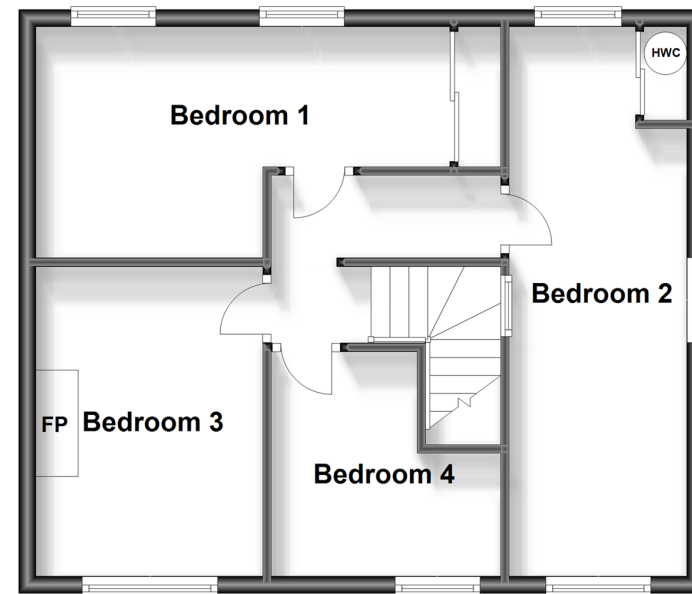
Ground Floor

Approx. 58.7 sq. metres (632.2 sq. feet)



First Floor

Approx. 50.8 sq. metres (546.5 sq. feet)



Accommodation

GROUND FLOOR

Entrance Hall

Lounge: 13'7 maximum x 12'0 (4.14m x 3.66m)

Kitchen/Diner: 17'11 x 9'11 (5.46m x 3.02m)

Sun Room: 10'7 maximum x 9'9 (3.23m x 2.97m)

Utility Room: 7'4 x 6'10 (2.24m x 2.08m)

Family Shower Room

Family Bathroom

FIRST FLOOR

Landing

Bedroom 1: 16'0 x 8'8 (4.88m x 2.64m) narrowing to 8'9 x 5'6 (2.67m x 1.68m)

Bedroom 2: 21'5 x 7'6 maximum (6.53m x 2.29m)

Bedroom 3: 12'0 x 8'8 maximum (3.66m x 2.64m)

Bedroom 4: 8'11 x 8'9 (2.72m x 2.67m) narrowing to 5'8 x 4'8 (1.73m x 1.42m)

OUTSIDE

Driveway

Front Garden

Rear Garden



Main features

- A larger than usual semi-detached house with ample off road parking
- Very large sun room to the rear of the property
- Generous size rear garden, a good canvas for your creativity to make this whatever you choose
- Very close to the beautiful National Trust Park, Petworth House; with truly wonderful grounds
- Short walk to the town with its array of cafes, boutique shops and restaurants



Nearest Schools

Primary School: Petworth Primary CofE School, South Grove

Secondary School: Midhurst Rother College 6.5 miles



Transport Information

Train Stations: Pulborough 4.4 miles, Haslemere 11.2 miles



Address

South Grove, Petworth, West Sussex, GU28



Directions

For directions to this property please contact us.



cubitt&west
Helping you move forwards

Call Pulborough Branch 01798 875151 ■ cubittandwest.co.uk



■ Legal advice should be taken to verify fixtures/fittings, planning, alterations and/or lease details ■ Appliances & services are untested, dimensions are approximate and floor plans are not to scale
■ Through a Homewise Home For Life Plan people aged 60+ can secure this property for up to 59% less, by purchasing a Lifetime Lease.



21405870/20240223/CT/JD