



OVER 60?

Secure this property
for up to **59% less!**

Price

£335,000

Freehold

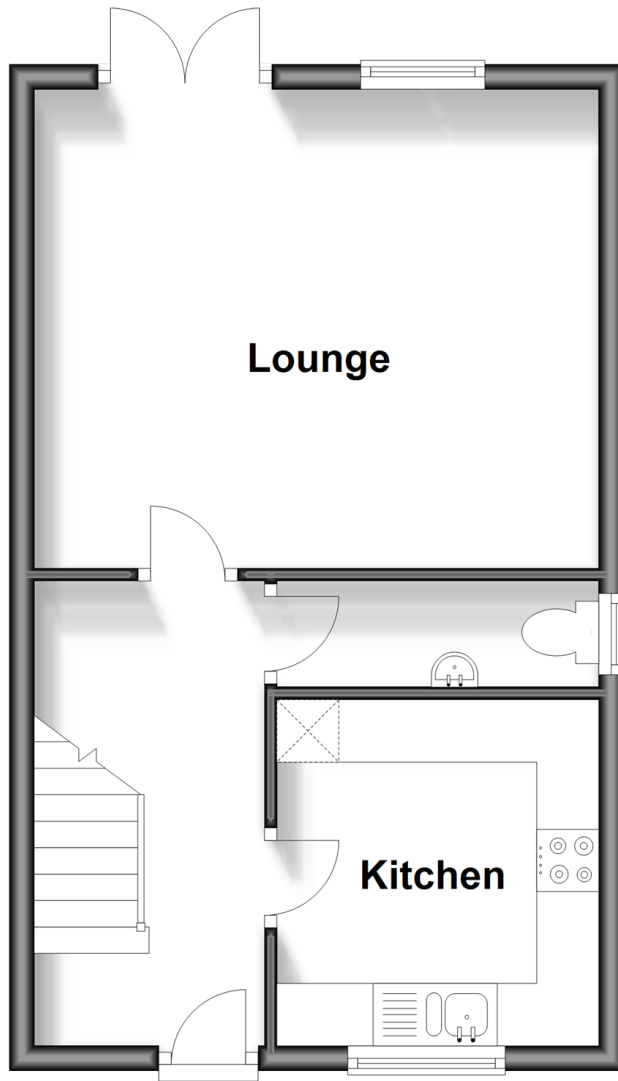
2x  1x  1x 

**Valentines Lea,
Northchapel, Petworth,
West Sussex, GU28**

cubitt&west
Helping you move forwards

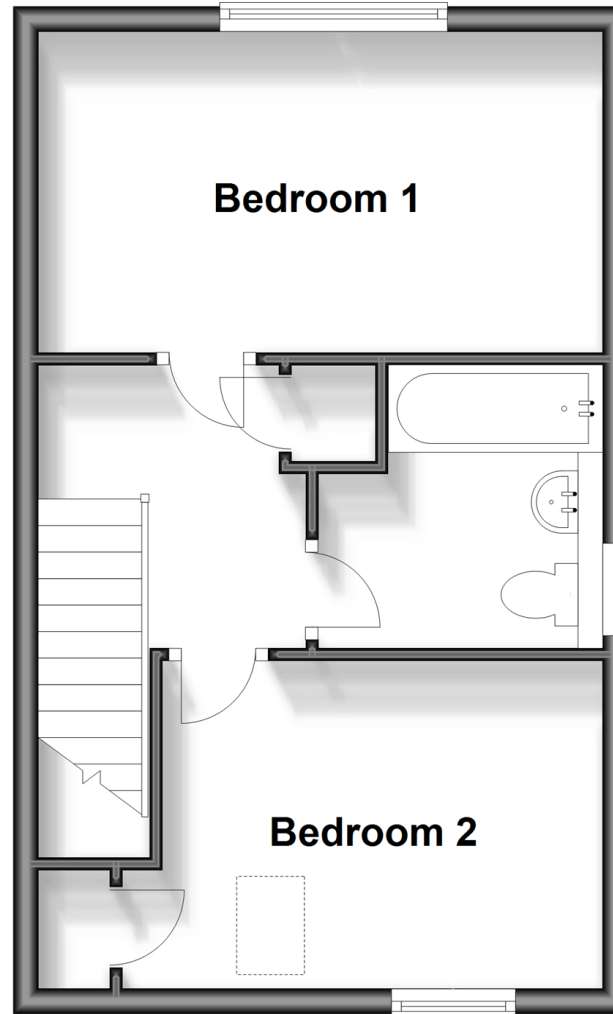
Ground Floor

Approx. 34.9 sq. metres (375.2 sq. feet)



First Floor

Approx. 34.9 sq. metres (375.2 sq. feet)



Accommodation

GROUND FLOOR

Entrance Hall

Kitchen: 8'10 x 8'6 (2.69m x 2.59m)

Cloakroom

Lounge: 14'10 x 12'7 (4.52m x 3.84m)

FIRST FLOOR

Landing

Bedroom 1: 14'10 x 8'5 (4.52m x 2.57m)

Family Bathroom

Bedroom 2: 13'0 up to fitted wardrobes x 8'7 (3.97m x 2.62m)

OUTSIDE

Front Garden

Landscaped Rear Garden

Two Allocated Parking Spaces



Main features

- A wonderful end of terrace house
- Set within a quiet cul-de-sac location
- Lovely countryside views from the rear of the property over open fields
- Two allocated parking spaces
- Short distance to Northchapel primary school and the children's play area
- Lovely walks close by



Nearest Schools

Primary School: Petworth Primary School 6.2 miles
Secondary School: Midhurst Rother College 7.7 miles



Transport Information

Train Stations: Billingshurst 8.9 miles, Pulborough 8.9 miles



Address

Valentines Lea, Northchapel, Petworth, West Sussex, GU28



Directions

For directions to this property please contact us.



cubitt&west
Helping you move forwards

Call Pulborough Branch 01798 875151 ■ cubittandwest.co.uk



- Legal advice should be taken to verify fixtures/fittings, planning, alterations and/or lease details
- Appliances & services are untested, dimensions are approximate and floor plans are not to scale
- Through a Homewise Home For Life Plan people aged 60+ can secure this property for up to 59% less, by purchasing a Lifetime Lease.



21405910/20240419/JD/JD