

OVER 60?

Secure this property
for up to **59% less!**



Price

£450,000

Freehold

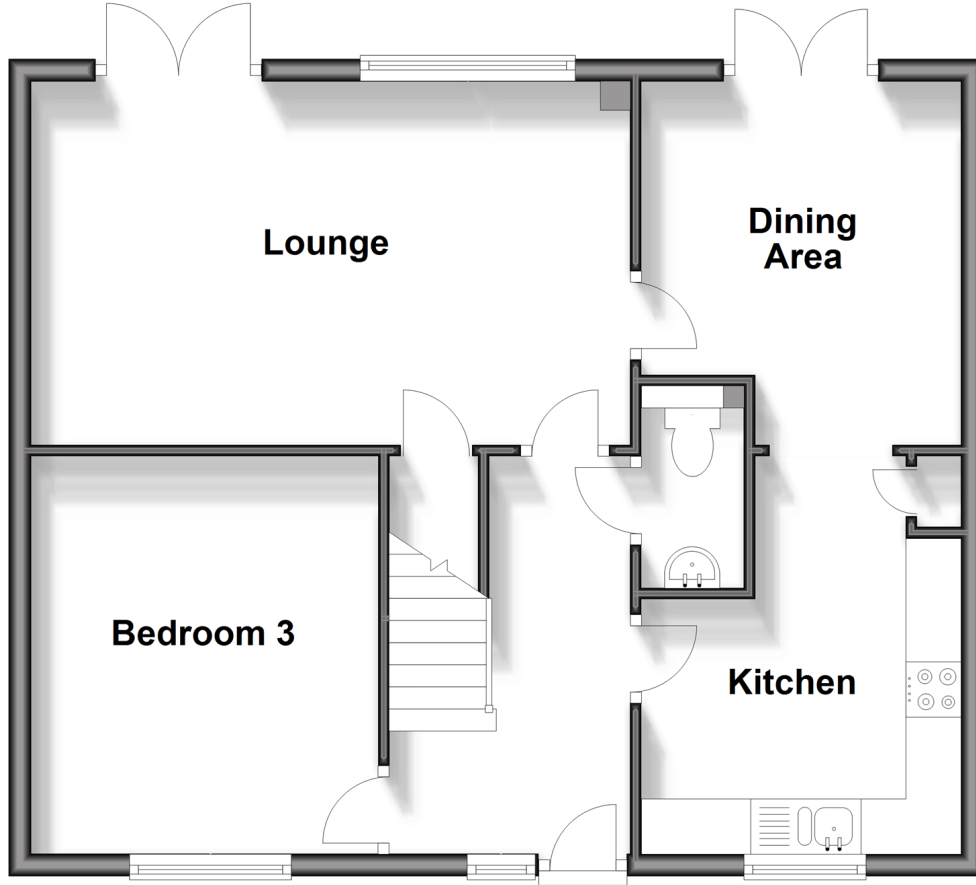
3x  1x  2x 

Corden Place, Codmore Hill, Pulborough,
West Sussex, RH20

cubitt&west
Helping you move forwards

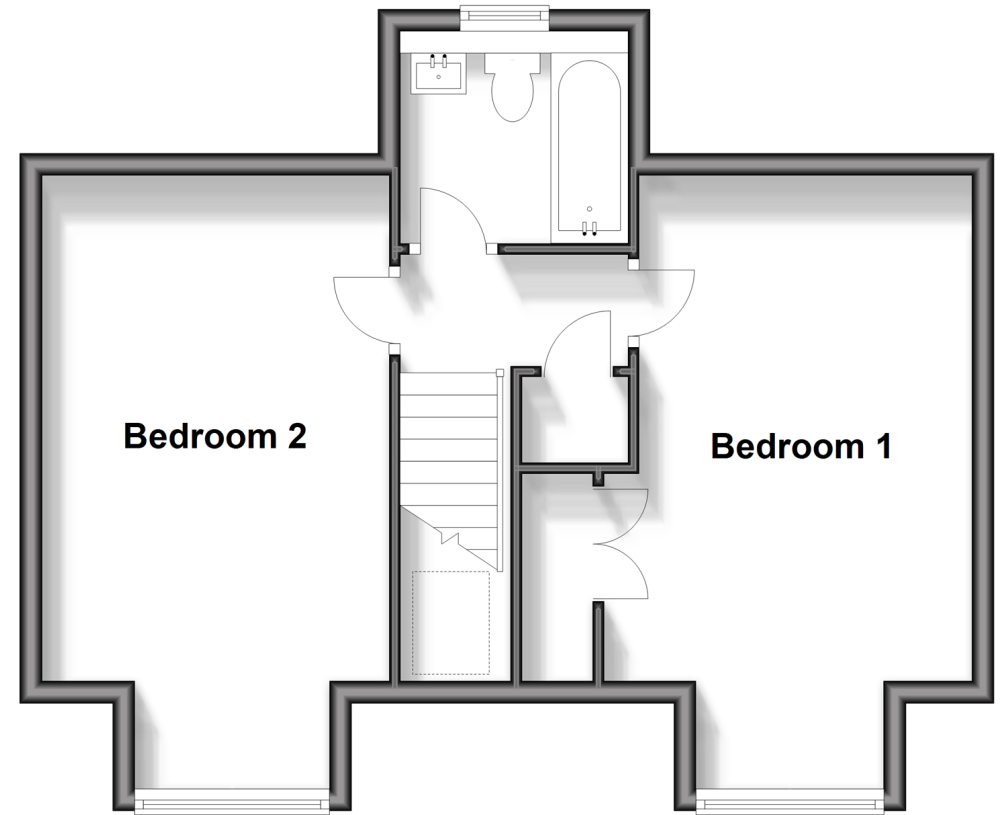
Ground Floor

Approx. 59.0 sq. metres (634.8 sq. feet)



First Floor

Approx. 44.7 sq. metres (481.4 sq. feet)



Accommodation

GROUND FLOOR

Entrance Hall

Cloakroom

Kitchen: (L-shaped) 11'10 x 6'1 (3.61m x 1.86m) plus 7'7 x 3'5 (2.31m x 1.04m)

Dining Area: 10'9 x 9'6 (3.28m x 2.90m)

Lounge: 17'9 x 10'9 (5.41m x 3.28m)

Bedroom 3: 11'8 x 10'3 (3.56m x 3.13m)

FIRST FLOOR

Landing

Bedroom 1: 18'6 into bay (5.64m) x 11'0 up to fitted wardrobes (3.36m) narrowing to 9'10 (3.00m)

Bedroom 2: 18'1 into bay x 10'2 (5.52m x 3.10m)

Family Bathroom: 6'10 x 5'6 (2.08m x 1.68m)

OUTSIDE

Two Allocated Parking Spaces

Front Garden

Rear Garden



Main features

- A stunning double fronted semi-detached house
- Remaining 6 years left on the NHBC warranty
- Modern kitchen with integrated appliances
- Off road parking for two vehicles
- Private rear garden with a patio area
- Scenic countryside walks straight from the estate
- Close proximity of the pharmacy and GP surgery, village cafe, other local shops and supermarkets
- The primary school and park is also very close by



Nearest Schools

Primary School: St Mary's C of E Primary 0.4 miles

Secondary School: The Weald School 4.1 miles



Transport Information

Train Stations: Pulborough 0.7 miles, Billingshurst 4.1 miles



Address

Corden Place, Codmore Hill, Pulborough, West Sussex, RH20



Directions

For directions to this property please contact us.



cubitt&west
Helping you move forwards

Call Pulborough Branch 01798 875151 ■ cubittandwest.co.uk



■ Legal advice should be taken to verify fixtures/fittings, planning, alterations and/or lease details ■ Appliances & services are untested, dimensions are approximate and floor plans are not to scale
■ Through a Homewise Home For Life Plan people aged 60+ can secure this property for up to 59% less, by purchasing a Lifetime Lease.



21405948/20240408/KT/JD