

OVER 60?

Secure this property
for up to **59% less!**



Price

£850,000

Freehold

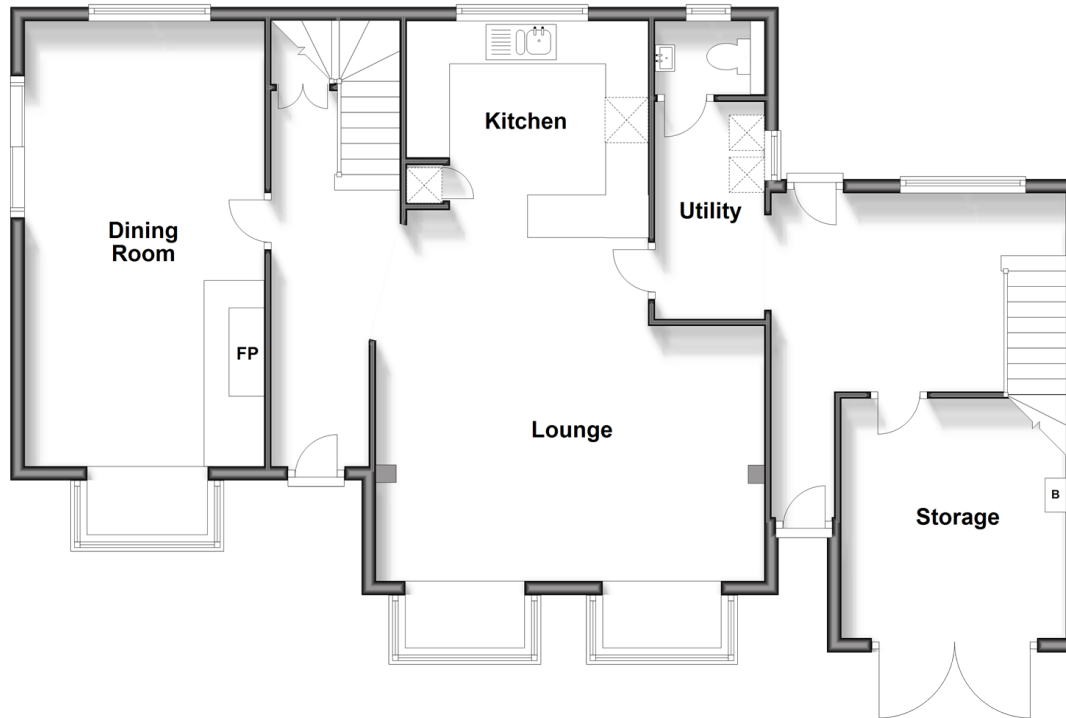
4x  2x  3x 

East Street, West Chiltington, West Sussex,
RH20

cubitt&west
Helping you move forwards

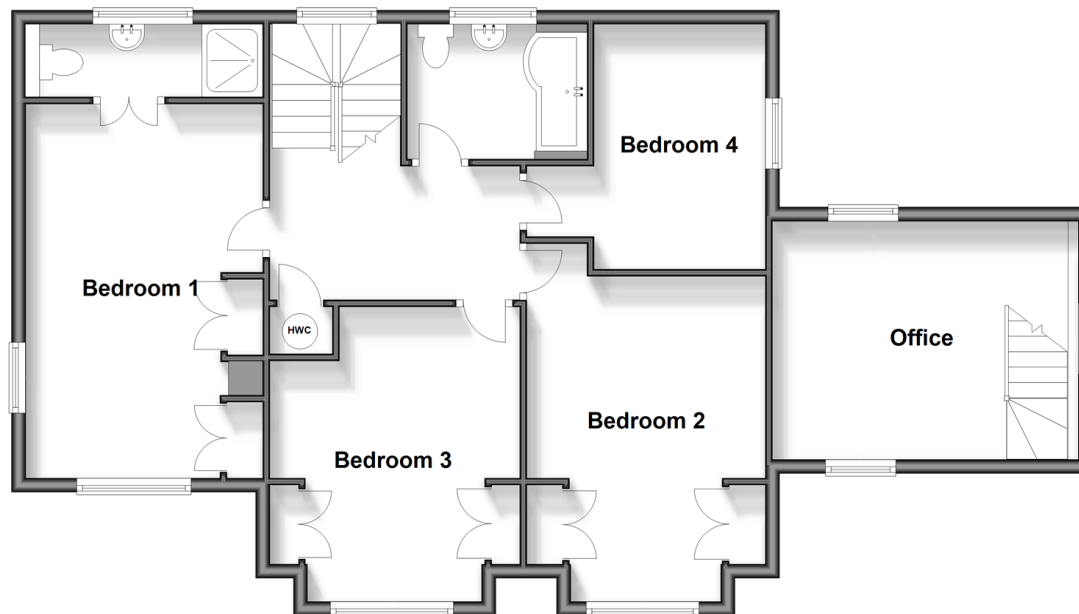
Ground Floor

Approx. 102.9 sq. metres (1107.4 sq. feet)



First Floor

Approx. 93.5 sq. metres (1006.9 sq. feet)



Accommodation

GROUND FLOOR

Entrance Hall

Dining Room: 20'8 x 11'2 maximum (6.30m x 3.41m)

Lounge: 18'2 maximum x 11'9 maximum (5.54m x 3.58m)

Kitchen : 11'3 x 10'0 maximum (3.43m x 3.05m)

Utility: 10'1 x 5'1 (3.08m x 1.55m)

Cloakroom

Inner Lobby: 13'9 x 9'2 (4.19m x 2.80m)

Storage

FIRST FLOOR

Landing

Bedroom 1: 17'3 x 11'5 into fitted wardrobes (5.26m x 3.48m)

En-Suite Shower Room

Bedroom 2: 13'6 into bay x 11'5 into fitted wardrobes (4.12m x 3.48m)

Bedroom 3: 15'0 into bay x 11'6 into fitted wardrobes (4.58m x 3.51m)

Bedroom 4: 11'4 x 8'2 (3.46m x 2.49m)

Office : 14'4 maximum x 11'0 (4.37m x 3.36m)

Family Bathroom

OUTSIDE

Driveway

Front Garden

Rear Garden

Side Garden



Main features

- A wonderful extended detached family house
- Versatile accommodation
- Large driveway for several vehicles, perfect for when family and friends visit
- Easy access to the village primary school, the church and other central village facilities
- Lovely countryside walks close by



Nearest Schools

Primary School: West Chiltington Community School

Secondary School: The Weald School 5.5 miles



Transport Information

Train Stations: Pulborough 3.8 miles, Billingshurst 4.8 miles, Amberley 7.9 miles



Address

East Street, West Chiltington, West Sussex, RH20



Directions

For directions to this property please contact us.



cubitt&west
Helping you move forwards

Call Pulborough Branch 01798 875151 ■ cubittandwest.co.uk



■ Legal advice should be taken to verify fixtures/fittings, planning, alterations and/or lease details ■ Appliances & services are untested, dimensions are approximate and floor plans are not to scale
■ Through a Homewise Home For Life Plan people aged 60+ can secure this property for up to 59% less, by purchasing a Lifetime Lease.



21405954/20240325/KT/JD