

OVER 60?

Secure this property
for up to **59% less!**



Price
£550,000
Freehold

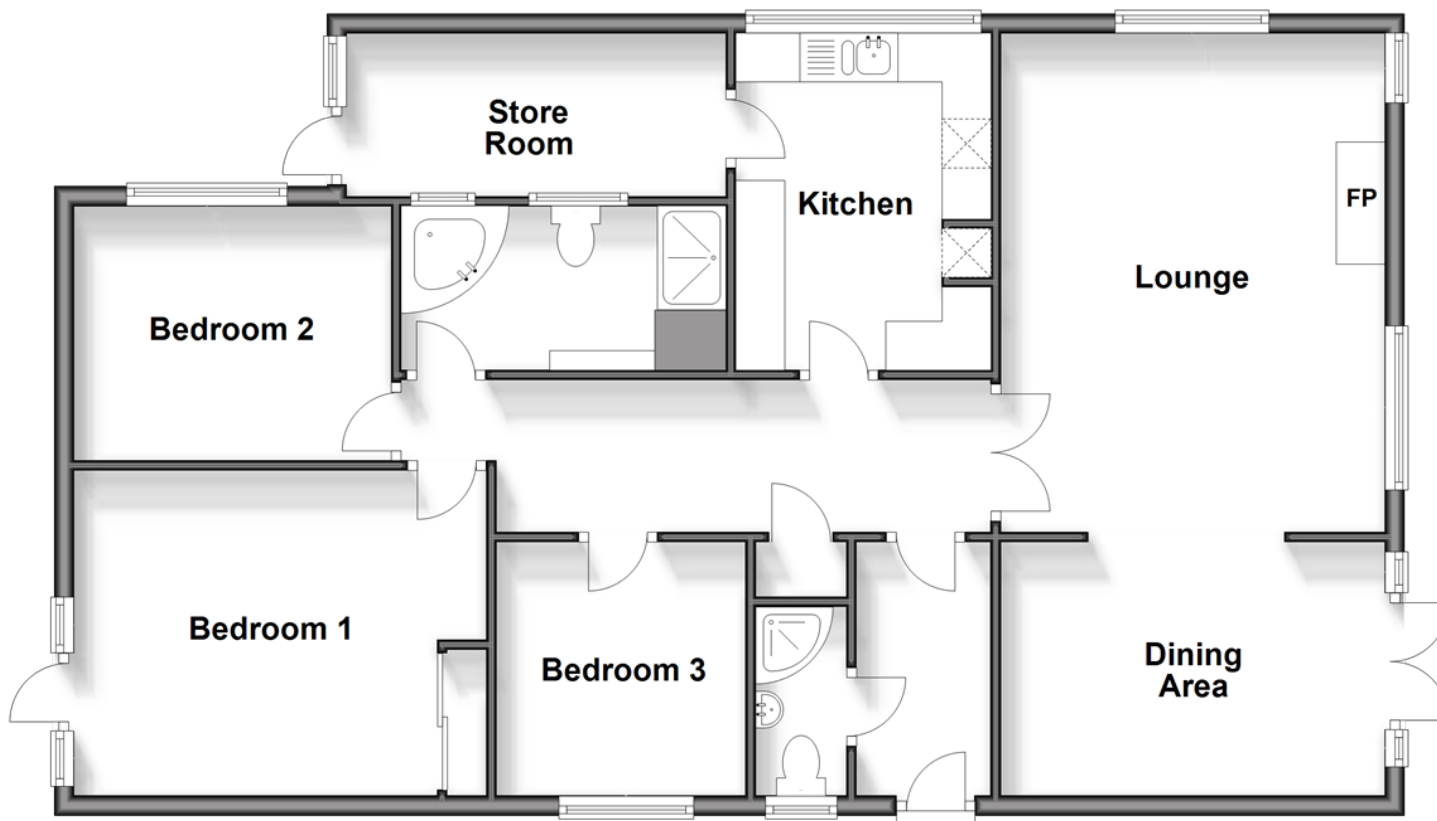
3x  1x  2x 

Arun Vale, Coldwaltham, West Sussex,
RH20

cubitt&west
Helping you move forwards

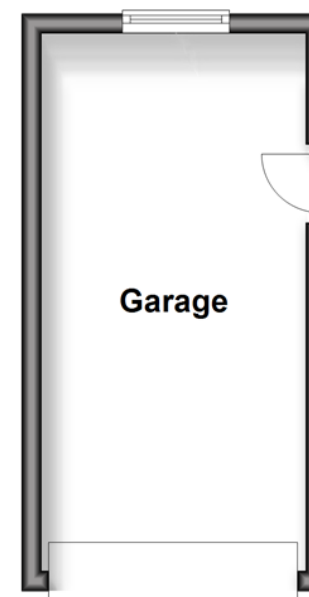
Ground Floor

Approx. 99.5 sq. metres (1071.5 sq. feet)



Outbuilding

Approx. 14.9 sq. metres (160.0 sq. feet)



Accommodation

GROUND FLOOR

Entrance Hall: 16'6 x 5'0 (5.03m x 1.53m)

Shower Room

Dining Area: 13'0 x 8'0 (3.97m x 2.44m)

Lounge : 17'1 x 12'9 (5.21m x 3.89m)

Kitchen: 11'4 x 8'6 (3.46m x 2.59m)

Store Room: 12'7 x 5'5 (3.84m x 1.65m)

Bathroom: 10'7 x 5'6 (3.23m x 1.68m)

Bedroom 1: 13'8 maximum x 10'1 (4.17m x 3.08m)

Bedroom 2: 10'7 x 9'0 (3.23m x 2.75m)

Bedroom 3: 8'6 x 7'9 (2.59m x 2.36m)

OUTBUILDING

Garage: 18'4 x 8'9 (5.59m x 2.67m)

OUTSIDE

Driveway

Front Garden

Rear Garden

Two Rear Garden Sheds

Side Garden With A Shed

Summer House



Main features

- A beautiful extended detached bungalow
- Wonderful front and rear gardens with plenty of sheds and a lovely summer house
- Highly sought after location
- Fantastic views towards the South Downs
- Close to the local church and primary school



Nearest Schools

Primary School: St James C of E Primary 0.2 miles

Secondary School: The Weald School 7.1 miles



Transport Information

Train Stations: Pulborough 2.2 miles, Amberley 4.6 miles



Address

Arun Vale, Coldwaltham, West Sussex, RH20



Directions

For directions to this property please contact us.



cubitt&west
Helping you move forwards

Call Pulborough Branch 01798 875151 ■ cubittandwest.co.uk



■ Legal advice should be taken to verify fixtures/fittings, planning, alterations and/or lease details ■ Appliances & services are untested, dimensions are approximate and floor plans are not to scale
■ Through a Homewise Home For Life Plan people aged 60+ can secure this property for up to 59% less, by purchasing a Lifetime Lease.



21405963/20240418/CT/JD