



Price

£560,000

Freehold

4x  1x  2x 

**Maple Way, Coulsdon,
Surrey, CR5**

OVER 60?

Secure this property
for up to **59% less!**



Video Tour available

cubitt&west
Helping you move forwards

Accommodation

GROUND FLOOR

Entrance Hall

Living Room: 15'1 x 13'8 (4.60m x 4.17m)

Kitchen/Breakfast Area: 20'6 x 10'6 (6.25m x 3.20m)

Utility Room: 15'9 x 6'8 (4.80m x 2.03m)

Cloakroom

Conservatory Area: 16'8 x 12'9 (5.08m x 3.89m)

FIRST FLOOR

Landing

Bedroom 1: 12'9 x 11'8 (3.89m x 3.56m)

Bedroom 2: 11'7 x 9'11 (3.53m x 3.02m)

Bedroom 3: 9'4 x 8'5 (2.85m x 2.57m)

Bathroom: 10'7 x 7'4 (3.23m x 2.24m)

SECOND FLOOR

Bedroom 4: 21'3 x 13'7 (6.48m x 4.14m)

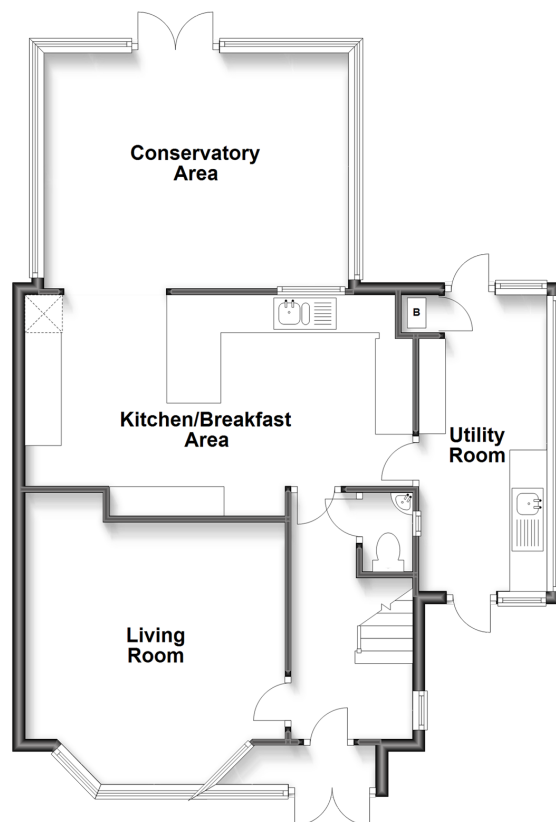
OUTSIDE

Front and Rear Gardens

Driveway

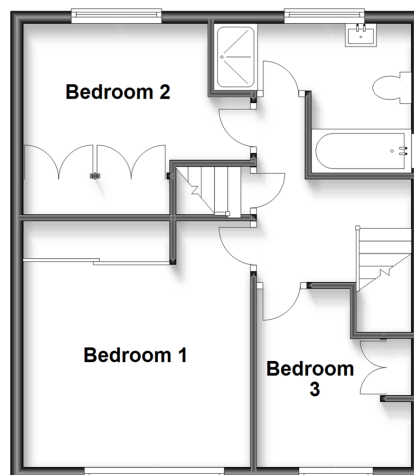
Ground Floor

Approx. 76.2 sq. metres (819.8 sq. feet)



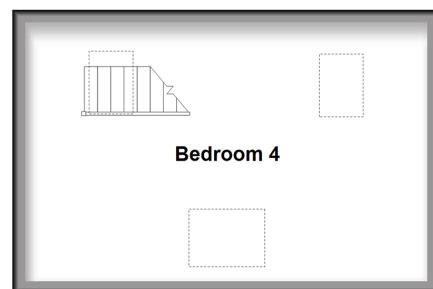
First Floor

Approx. 43.9 sq. metres (472.9 sq. feet)



Second Floor

Approx. 26.6 sq. metres (286.5 sq. feet)





Main features

- Large semi-detached home with driveway
- Extended throughout with bonus utility room & conservatory
- Loft extension and great size rooms throughout
- Lovingly updated by the current owners
- Good size garden with patio area
- Excellent location for schools for all ages and transport links



Nearest Schools

Primary Schools: St Aidan's Catholic Primary 2.2 miles, Smitham Primary 2.2 miles, Merstham Primary 2.2 miles
Secondary Schools: Coulsdon High School 1.8 miles, Greenacre School for Girls 2.9 miles, The Beacon School 2.9 miles



Transport Information

Train Stations: Chipstead 2.0 miles, Coulsdon South 2.1 miles, Kingswood 2.4 miles



Address

Maple Way, Coulsdon, Surrey, CR5



Directions

For directions to this property please contact us.



cubitt&west
Helping you move forwards

Call Purley Branch 020 8660 8882 ■ cubittandwest.co.uk



- A private rental licensing scheme applies to some properties in this area, please contact us before proceeding
- Appliances & services are untested, dimensions are approximate and floor plans are not to scale

- Legal advice should be taken to verify fixtures/fittings, planning, alterations and/or lease details
- Through a Homewise Home For Life Plan people aged 60+ can secure this property for up to 59% less, by purchasing a Lifetime Lease.



21507513/20221004/DI/MS