



OVER 60?

Secure this property
for up to **59% less!**

Price

£260,000

Leasehold

2x  1x  1x 

**Godstone Road, Kenley,
Surrey, CR8**

cubitt&west
Helping you move forwards



Main features

- Modern split level maisonette - approximately over 975 square foot
- Good size private garden terrace
- Walking distance to Kenley & Purley stations
- Very well presented
- Local amenities on your doorstep
- Ideal first time buy or buy to let opportunity

Accommodation

LOWER GROUND FLOOR

Entrance Hall

Kitchen/Breakfast Area: 14'0 x 12'11 (4.27m x 3.94m)

Lounge: 14'0 x 12'9 (4.27m x 3.89m)

Cloakroom

GROUND FLOOR

Landing

Bathroom

SPLIT LEVEL FIRST FLOOR

Landing

Bedroom 1: 15'0 x 13'1 (4.58m x 3.99m)

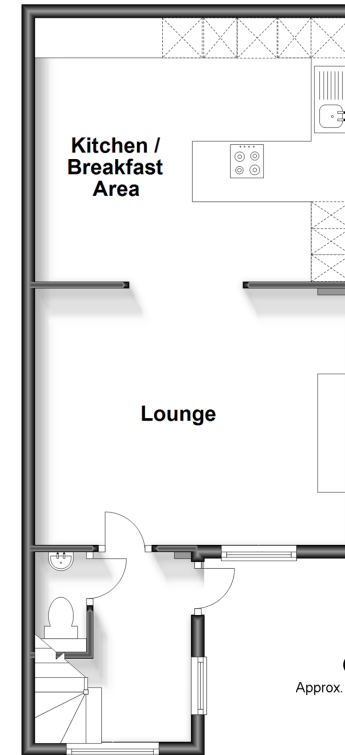
Bedroom 2: 11'11 x 9'0 (3.63m x 2.75m)

OUTSIDE

Private Garden Terrace

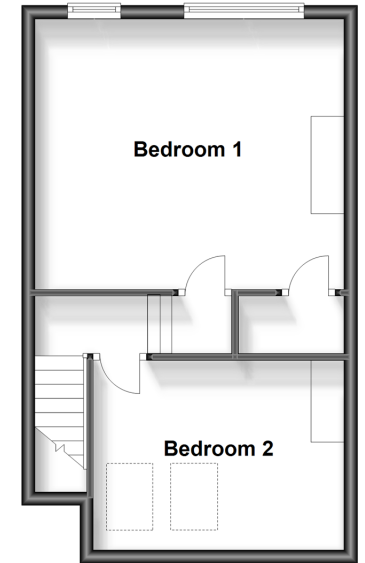
Lower Ground Floor

Approx. 44.5 sq. metres (478.5 sq. feet)



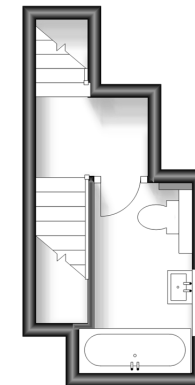
Split Level First Floor

Approx. 36.8 sq. metres (396.2 sq. feet)



Ground Floor

Approx. 9.6 sq. metres (103.5 sq. feet)



Call Purley - 020 8660 8882 ■ cubittandwest.co.uk

- A private rental licensing scheme applies to some properties in this area, please contact us before proceeding
- Legal advice should be taken to verify fixtures/fittings, planning, alterations and/or lease details
- Appliances & services are untested, dimensions are approximate and floor plans are not to scale
- Through a Homewise Home For Life Plan people aged 60+ can secure this property for up to 59% less, by purchasing a Lifetime Lease.



21509082/20231027/DI/MS