



Price

£400,000

Leasehold

2x  2x  1x 

**Haven House,
Addington Road, South
Croydon, Surrey, CR2**

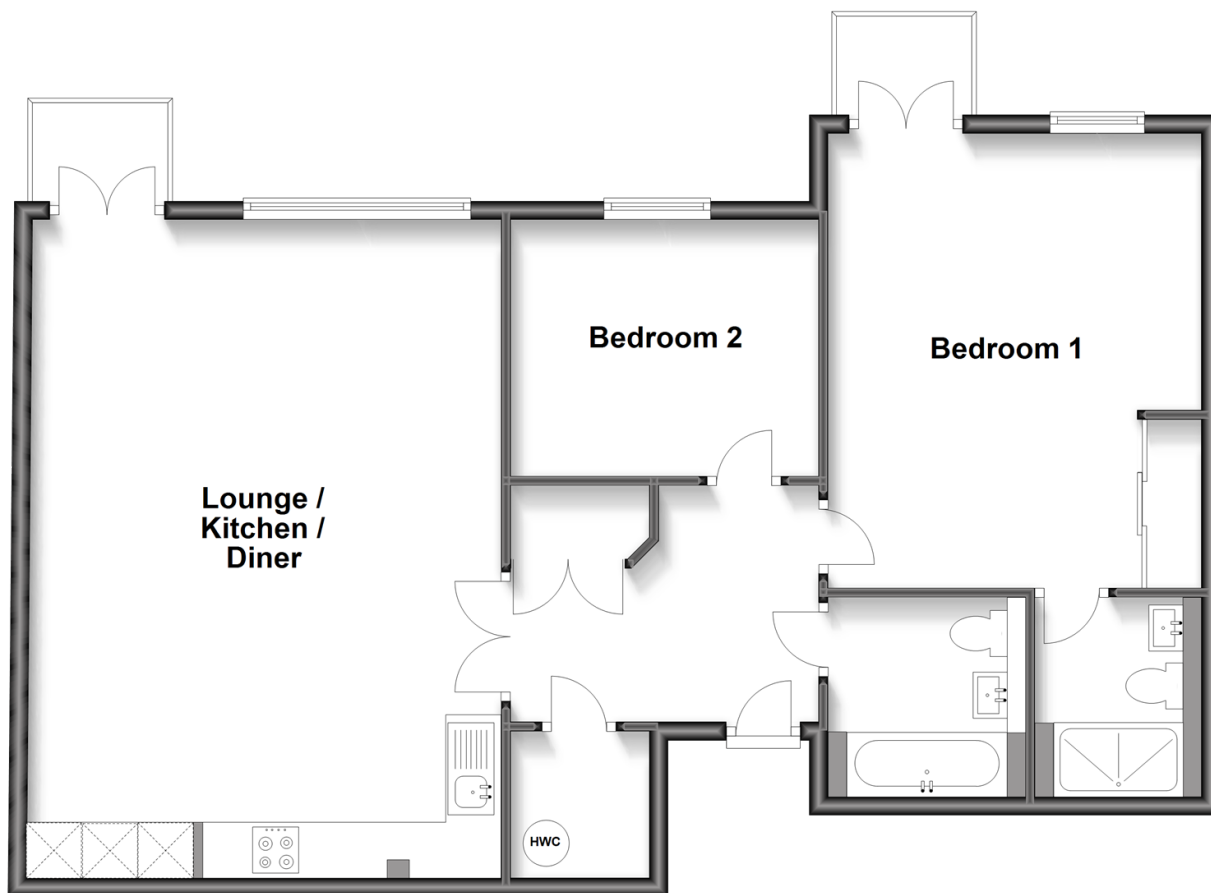


Video Tour available

cubitt&west
Helping you move forwards

First Floor

Approx. 87.9 sq. metres (945.9 sq. feet)



Accommodation

FIRST FLOOR

Entrance Hall

Lounge/Kitchen/Diner: 23'11 x 16'7 (7.29m x 5.06m)

Balcony of Lounge

Bedroom 1: 16'7 x 9'10 (5.06m x 3.00m)

Balcony of Bedroom

En-Suite Shower Room

Bedroom 2: 10'9 x 7'11 (3.28m x 2.41m)

Bathroom

OUTSIDE

Allocated Parking Space

Communal Gardens

Cycle Storage



Main features

- Immaculate first floor gated apartment with 2 balcony's for the over 55's
- Prestigious gated development built in 2013
- 2 double bedrooms and en-suite shower room to bedroom 1
- Allocated parking space, lots of storage
- Located opposite the grounds of the De Vere Selsdon Estate Hotel and golf course, beside Sanderstead Plantation woods



Nearest Schools

Primary Schools: Greenvale Primary 0.6 miles, Selsdon Primary and Nursery School 0.6 miles, Gresham Primary 0.6 miles Secondary Schools: Croydon High School 0.2 miles, Kingsdown Secondary School 1.0 miles, Selsdon High School 1.0 miles Further Education: Croydon High



Transport Information

Train Stations: Sanderstead 1.2 miles, Purley Oaks 1.4 miles, Riddlesdown 1.4 miles



Address

Haven House, Addington Road, South Croydon, Surrey, CR2



Directions

For directions to this property please contact us.



cubitt&west
Helping you move forwards

Call Purley Branch 020 8660 8882 ■ cubittandwest.co.uk



- A private rental licensing scheme applies to some properties in this area, please contact us before proceeding
- Appliances & services are untested, dimensions are approximate and floor plans are not to scale

- Legal advice should be taken to verify fixtures/fittings, planning, alterations and/or lease details



21510454/20230707/DI/OM