



**Price**

**£95,000**

**Leasehold**

1x  1x  1x 

**Azalea Court,  
Whytecliffe Road South,  
Purley, Surrey, CR8**



**Video Tour available**

**cubitt&west**  
Helping you move forwards





## Main features

- Second floor retirement flat with lift access
- Laundry room & communal lounge
- Guest suite available for visitors and guest parking
- Beautiful communal gardens with pergola
- Fantastic transport links and 2 minutes from Purley station

## Accommodation

### SECOND FLOOR

Entrance Hallway

Lounge/Diner: 19'2 x 11'7 (5.85m x 3.53m)

Kitchen: 8'4 x 8'2 (2.54m x 2.49m)

Bedroom: 11'8 x 8'5 (3.56m x 2.57m)

Bathroom: 8'2 x 5'7 (2.49m x 1.70m)

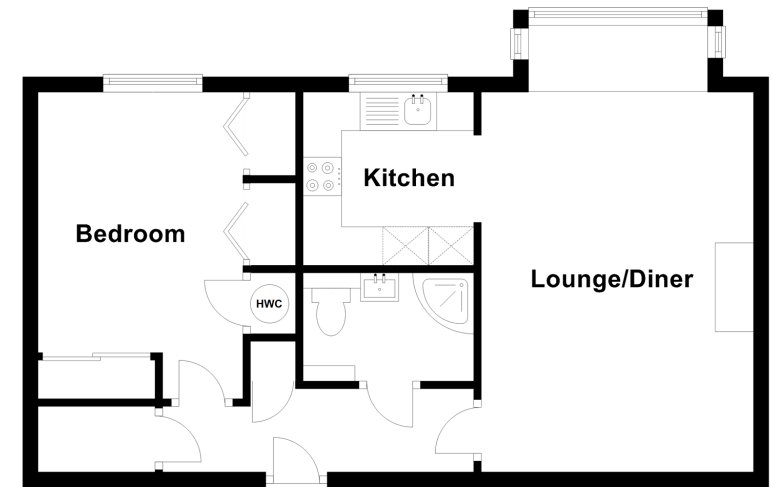
### OUTSIDE

Communal Gardens

Visitor's Parking

### Second Floor

Approx. 48.2 sq. metres (519.1 sq. feet)



**Call Purley - 020 8660 8882 ■ [cubittandwest.co.uk](http://cubittandwest.co.uk)**

- A private rental licensing scheme applies to some properties in this area, please contact us before proceeding
- Legal advice should be taken to verify fixtures/fittings, planning, alterations and/or lease details
- Appliances & services are untested, dimensions are approximate and floor plans are not to scale



21510502/20230721/TS/TS