



**Guide Price**  
**£90,000**

**Leasehold**

1x  1x  1x 

**Azalea Court,**  
**Whytecliffe Road South,**  
**Purley, Surrey, CR8**



Video Tour available

**cubitt&west**  
Helping you move forwards





## Main features

- First floor retirement apartment in central Purley location
- Development is for the over 55's, independent living with part time warden assistance
- Lift access to all floors
- Recently decorated and new carpets
- Stone's throw from Purley station, shops & cafes

## Accommodation

### FIRST FLOOR

Hallway

Lounge: 16'2 x 12'6 (4.93m x 3.81m)

Kitchen: 8'1 x 7'7 (2.47m x 2.31m)

Bedroom : 13'3 x 8'5 (4.04m x 2.57m)

Bathroom: 7'2 x 5'1 (2.19m x 1.55m)

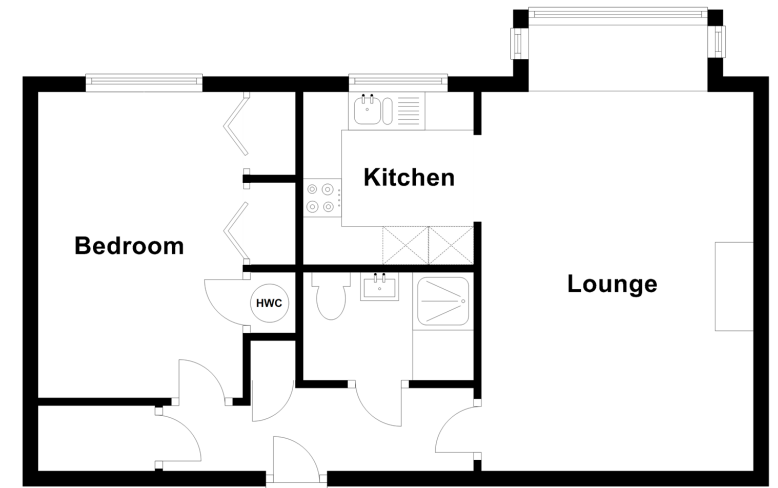
### OUTSIDE

Visitor's Parking

Communal Grounds

### First Floor

Approx. 48.2 sq. metres (519.1 sq. feet)



**Call Purley - 020 8660 8882 ■ [cubittandwest.co.uk](http://cubittandwest.co.uk)**

- A private rental licensing scheme applies to some properties in this area, please contact us before proceeding
- Legal advice should be taken to verify fixtures/fittings, planning, alterations and/or lease details
- Appliances & services are untested, dimensions are approximate and floor plans are not to scale



21510541/20231102/MS/MW