



Price

£130,000

Leasehold

1x  1x  1x 

**Liddell Court, Foxley Hill
Road, Purley, Surrey,
CR8**



Video Tour available

cubitt&west
Helping you move forwards



Main features

- First floor retirement flat with lift access
- Car park to rear (first come first served basis)
- Short walk to Purley station and town centre
- Good condition throughout
- Communal gardens

Accommodation

FIRST FLOOR

Entrance Hall

Lounge: 13'9 x 13'0 (4.19m x 3.97m)

Kitchen: 11'5 x 4'2 (3.48m x 1.27m)

Bedroom: 13'3 x 9'3 (4.04m x 2.82m)

Shower Room

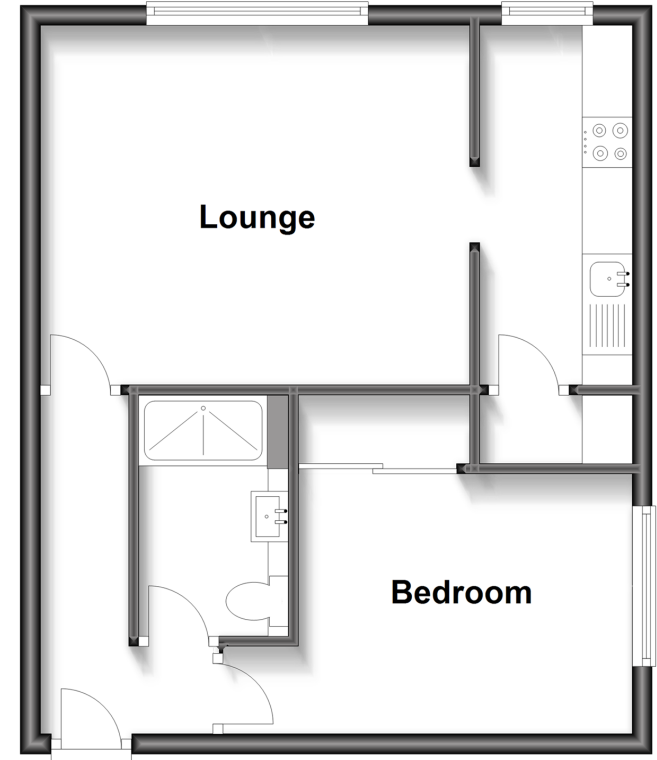
OUTSIDE

Communal Garden

Car Park

First Floor

Approx. 41.3 sq. metres (444.5 sq. feet)



Call Purley - 020 8660 8882 ■ cubittandwest.co.uk

- A private rental licensing scheme applies to some properties in this area, please contact us before proceeding
- Legal advice should be taken to verify fixtures/fittings, planning, alterations and/or lease details
- Appliances & services are untested, dimensions are approximate and floor plans are not to scale



21510578/20230208/MS/TS