



Price
£150,000

Leasehold

1x  1x  1x 

**Reynard Court, Foxley
Lane, Purley, Surrey,
CR8**

OVER 60?

Secure this property
for up to **59% less!**



Video Tour available

cubitt&west
Helping you move forwards



Main features

- Lovely ground floor retirement apartment
- Direct access to private patio area
- Good size rooms throughout and presented in move in condition
- Communal lounge and laundry room
- Central Purley location



Accommodation

GROUND FLOOR

Entrance Hall

Lounge: 16'11 x 14'6 at widest point
(5.16m x 4.42m)

Kitchen: 8'11 x 5'9 (2.72m x 1.75m)

Bedroom: 18'0 x 8'9 (5.49m x 2.67m)

Bathroom

OUTSIDE

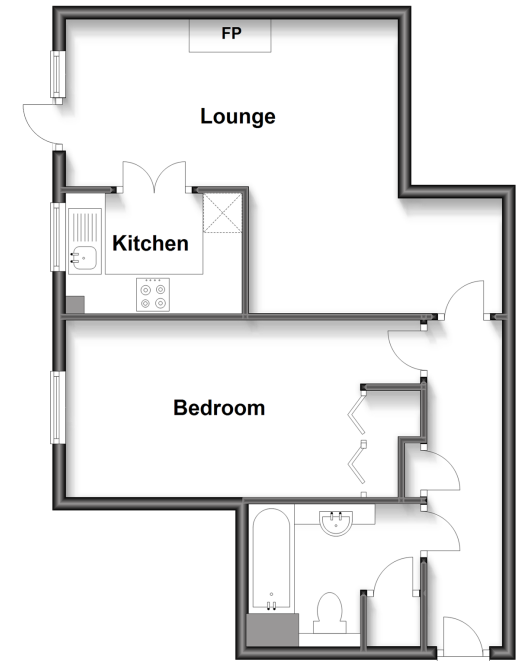
Private Patio Area

Visitor's Parking



Ground Floor

Approx. 52.8 sq. metres (568.1 sq. feet)



Call Purley - 020 8660 8882 ■ cubittandwest.co.uk

- A private rental licensing scheme applies to some properties in this area, please contact us before proceeding
- Legal advice should be taken to verify fixtures/fittings, planning, alterations and/or lease details
- Appliances & services are untested, dimensions are approximate and floor plans are not to scale
- Through a Homewise Home For Life Plan people aged 60+ can secure this property for up to 59% less, by purchasing a Lifetime Lease.



21510613/20220802/DI/MS