



Guide Price
£650,000

Freehold

4x  2x  2x 

**Knighton Close, South
Croydon, Surrey, CR2**

OVER 60?

Secure this property
for up to **59% less!**

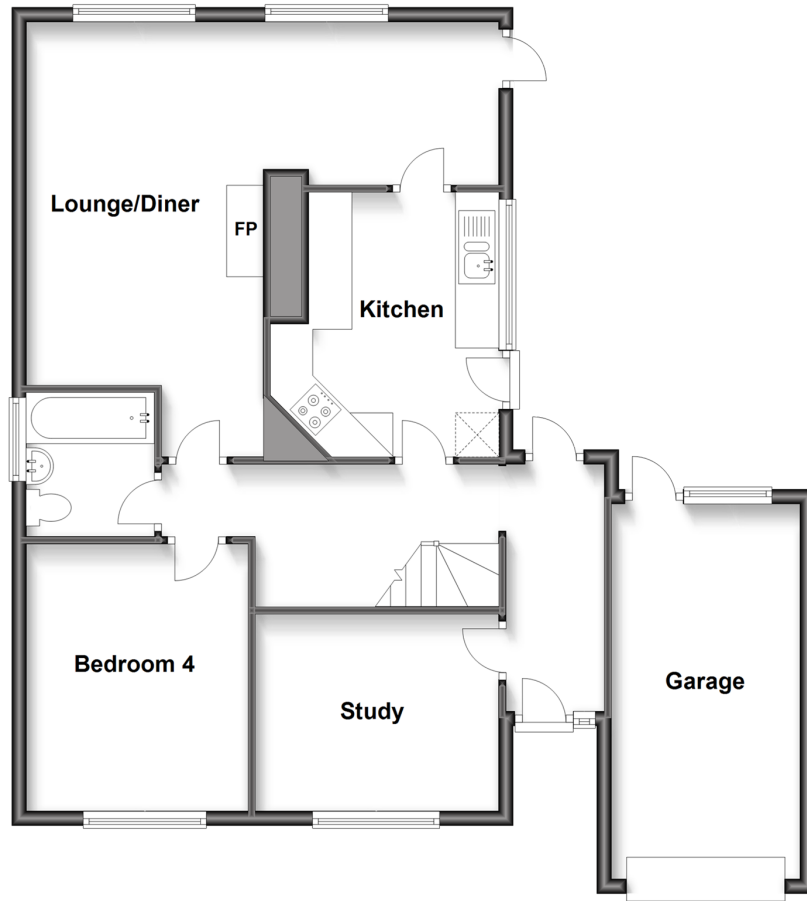


Video Tour available

cubitt&west
Helping you move forwards

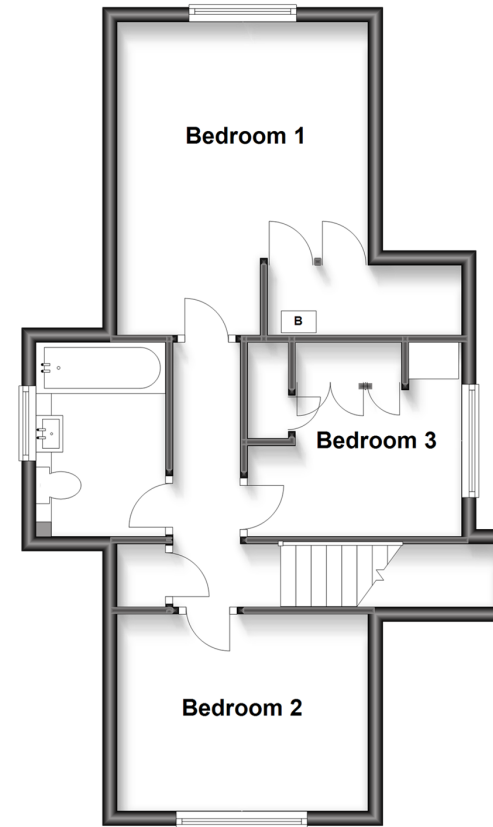
Ground Floor

Approx. 75.0 sq. metres (807.1 sq. feet)



First Floor

Approx. 46.6 sq. metres (501.5 sq. feet)



Accommodation

GROUND FLOOR

Entrance Hall

Kitchen: 11'1 x 8'6 (3.38m x 2.59m)

Lounge/Diner: 18'9 x 17'2 (5.72m x 5.24m)

Bedroom 4: 11'9 x 9'9 (3.58m x 2.97m)

Study: 10'5 x 8'6 (3.18m x 2.59m)

Bathroom: 5'6 x 4'9 (1.68m x 1.45m)

FIRST FLOOR

Landing

Bedroom 1: 13'7 x 11'3 (4.14m x 3.43m)

Bedroom 2: 11'3 x 8'6 (3.43m x 2.59m)

Bedroom 3: 9'7 x 8'3 (2.92m x 2.52m)

Bathroom 2: 8'3 x 5'5 (2.52m x 1.65m)

OUTSIDE

Driveway

Garage

Front Garden

Rear Garden



Main features

- Charming mid-century modern, dual-linked 'chalet' house in a leafy green setting
- Original features, bright and airy rooms throughout, maple flooring and hand-crafted wooden banisters.
- Flexible living space with bonus study to make potential extra bedroom
- Substantial scope to extend with wrap around garden, garage and driveway



Nearest Schools

Primary Schools: Cumnor House 0.2 miles, Regina Coeli Catholic Primary 0.3 miles, Christ Church CofE Primary 0.4 miles, Purley Oaks Primary 0.5 miles Secondary Schools: Harris Academy 0.1 miles, Thomas More Catholic School 0.6 miles, Whitgift School 0.8 miles



Transport Information

Train Stations: Purley Oaks 0.4 miles, Sanderstead 0.6 miles, Purley 0.9 miles



Address

Knighton Close, South Croydon, Surrey, CR2



Directions

For directions to this property please contact us.



cubitt&west
Helping you move forwards

Call Purley Branch 020 8660 8882 ■ cubittandwest.co.uk



- A private rental licensing scheme applies to some properties in this area, please contact us before proceeding
- Appliances & services are untested, dimensions are approximate and floor plans are not to scale

- Legal advice should be taken to verify fixtures/fittings, planning, alterations and/or lease details
- Through a Homewise Home For Life Plan people aged 60+ can secure this property for up to 59% less, by purchasing a Lifetime Lease.



21510638/20230712/MS/MS