



**Guide Price**  
**£315,000**

**Leasehold**

2x  1x  1x 

**Phoenix Court, Croham  
Road, South Croydon,  
Surrey, CR2**

**OVER 60?**

Secure this property  
for up to **59% less!**



Video Tour available

**cubitt&west**  
Helping you move forwards





## Main features

- Ground floor apartment with allocated parking space
- Built in early 1990's, 2 extra visitors parking spaces
- Stunning white gloss kitchen
- Good size lounge with space for dining
- Communal gardens

## Accommodation

### GROUND FLOOR

#### Entrance Hall

Lounge: 17'2 x 10'8 (5.24m x 3.25m)

Kitchen: 9'4 x 7'6 (2.85m x 2.29m)

Bedroom 1: 14'3 x 9'6 (4.35m x 2.90m)

Bedroom 2: 13'3 x 9'5 (4.04m x 2.87m)

#### Bathroom

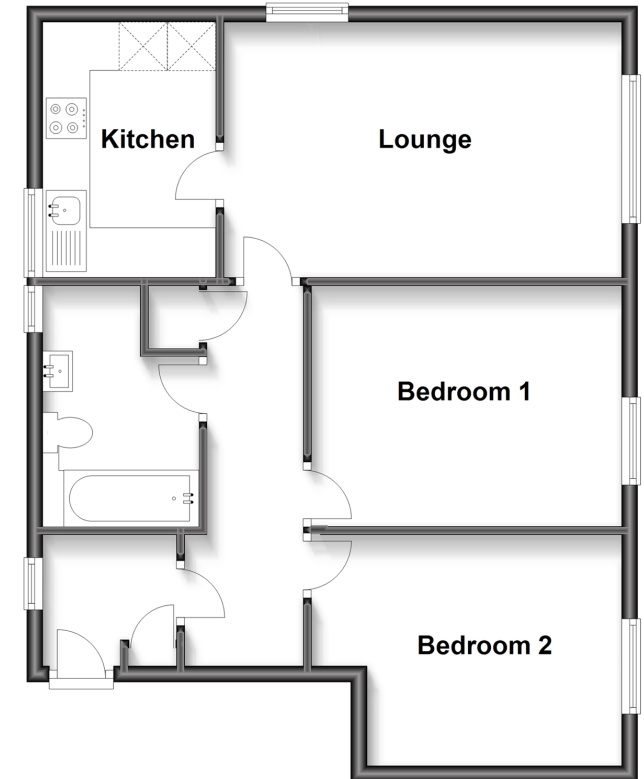
### OUTSIDE

#### Allocated Parking

#### Communal Gardens

## Ground Floor

Approx. 61.0 sq. metres (656.3 sq. feet)



**Call Purley - 020 8660 8882 ■ [cubittandwest.co.uk](http://cubittandwest.co.uk)**

- A private rental licensing scheme applies to some properties in this area, please contact us before proceeding
- Legal advice should be taken to verify fixtures/fittings, planning, alterations and/or lease details
- Appliances & services are untested, dimensions are approximate and floor plans are not to scale
- Through a Homewise Home For Life Plan people aged 60+ can secure this property for up to 59% less, by purchasing a Lifetime Lease.



21510707/20230313/TS/TS