



**OVER 60?**

Secure this property  
for up to **59% less!**

**Price**

**£285,000**

**Leasehold**

2x  1x  1x 

**The Pines, Purley,  
Surrey, CR8**

**cubitt&west**  
Helping you move forwards





## Main features

- Larger than average ground floor apartment
- Double bedrooms, both with fitted wardrobes
- Flooded with natural light and triple aspect windows
- Garage en-bloc and ample parking
- Ideal location for transport links and town centre

## Accommodation

### GROUND FLOOR

#### Entrance Hall

Lounge/Diner: 14'8 x 13'6 (4.47m x 4.12m)

Kitchen: 18'7 x 6'7 (5.67m x 2.01m)

Bedroom 1: 12'8 x 10'9 (3.86m x 3.28m)

Bedroom 2: 12'6 x 7'2 (3.81m x 2.19m)

#### Bathroom

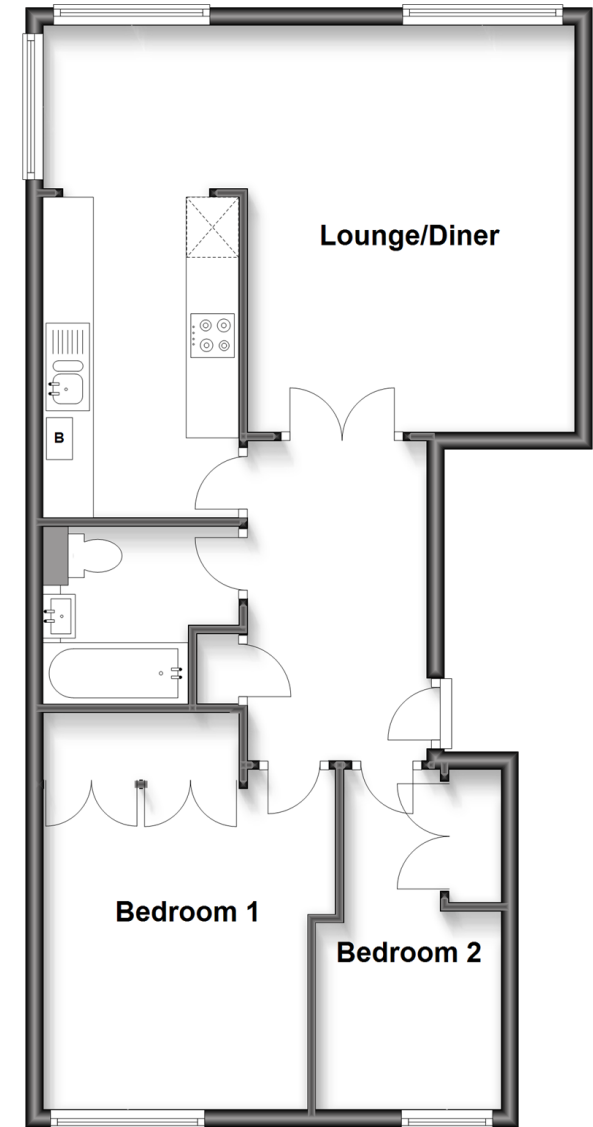
### OUTSIDE

Garage En-Bloc

Communal Gardens

## Ground Floor

Approx. 65.8 sq. metres (708.5 sq. feet)



**Call Purley - 020 8660 8882 ■ [cubittandwest.co.uk](http://cubittandwest.co.uk)**

- A private rental licensing scheme applies to some properties in this area, please contact us before proceeding
- Legal advice should be taken to verify fixtures/fittings, planning, alterations and/or lease details
- Appliances & services are untested, dimensions are approximate and floor plans are not to scale
- Through a Homewise Home For Life Plan people aged 60+ can secure this property for up to 59% less, by purchasing a Lifetime Lease.



21510762/20240507/DI/TS