



Guide Price
£575,000

Freehold

3x  1x  2x 

**Mitchley Avenue, Purley,
Surrey, CR8**

OVER 60?

Secure this property
for up to **59% less!**



Video Tour available

cubitt&west
Helping you move forwards



Main features

- Semi-detached home in popular Riddlesdown location
- Walking distance to 3 mainline stations
- Catchment area for 'outstanding' schools
- Large rear garden, garage & driveway for 3 cars
- Presented in excellent condition

Accommodation

GROUND FLOOR

Porch
Entrance Hall
Dining Room: 13'3 x 12'3 (4.04m x 3.74m)
Lounge: 16'5 x 10'7 (5.01m x 3.23m)
Kitchen: 9'8 x 7'5 (2.95m x 2.26m)

FIRST FLOOR

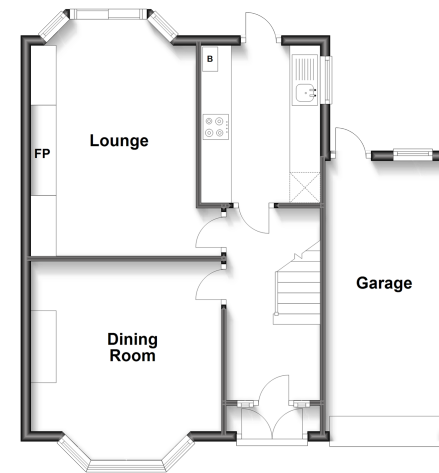
Landing
Bedroom 1: 16'3 x 9'3 up to fitted wardrobes (4.96m x 2.82m)
Bedroom 2: 14'2 x 10'1 up to fitted wardrobes (4.32m x 3.08m)
Bedroom 3: 9'8 x 7'6 (2.95m x 2.29m)
Bathroom: 7'6 x 7'4 (2.29m x 2.24m)

OUTSIDE

Front & Rear Gardens
Garage & Driveway

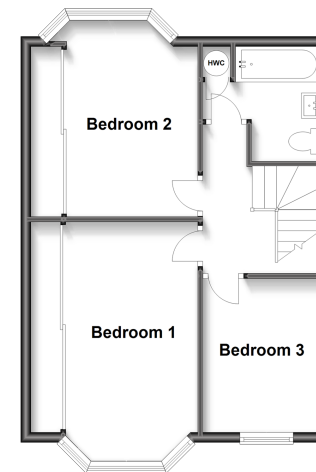
Ground Floor

Approx. 45.5 sq. metres (489.5 sq. feet)



First Floor

Approx. 45.5 sq. metres (489.5 sq. feet)



Call Purley - 020 8660 8882 ■ cubittandwest.co.uk

- A private rental licensing scheme applies to some properties in this area, please contact us before proceeding
- Legal advice should be taken to verify fixtures/fittings, planning, alterations and/or lease details
- Appliances & services are untested, dimensions are approximate and floor plans are not to scale
- Through a Homewise Home For Life Plan people aged 60+ can secure this property for up to 59% less, by purchasing a Lifetime Lease.



21510775/20230605/MS/MS