



OVER 60?

Secure this property
for up to **59% less!**

Price
£175,000

Leasehold

1x  1x  1x 

**Victoria Road, Coulsdon,
Surrey, CR5**

cubitt&west
Helping you move forwards



Main features

- Stunning second floor modern apartment
- Secure entry phone system
- Lots of storage and fitted wardrobes
- Prime central Coulsdon location
- Walking distance to three stations and local amenities

Accommodation

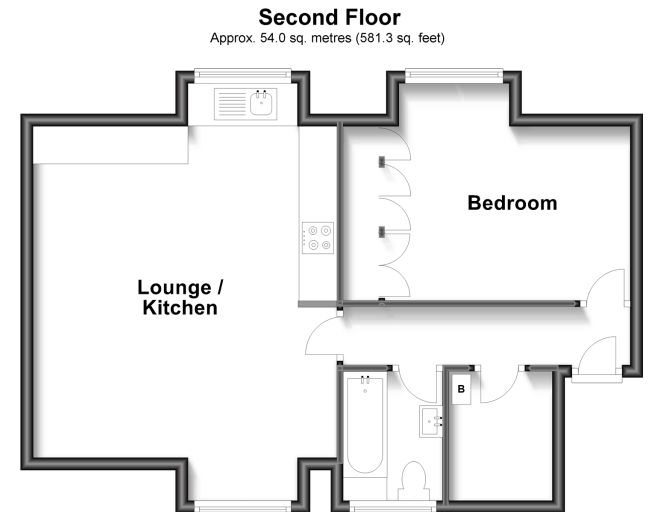
SECOND FLOOR

Entrance Hall

Kitchen/Lounge: 21'8 x 15'9 (6.61m x 4.80m)

Bedroom: 12'9 x 11'2 (3.89m x 3.41m)

Bathroom: 7'2 x 5'8 (2.19m x 1.73m)



Call Purley - 020 8660 8882 ■ cubittandwest.co.uk

- A private rental licensing scheme applies to some properties in this area, please contact us before proceeding
- Legal advice should be taken to verify fixtures/fittings, planning, alterations and/or lease details
- Appliances & services are untested, dimensions are approximate and floor plans are not to scale
- Through a Homewise Home For Life Plan people aged 60+ can secure this property for up to 59% less, by purchasing a Lifetime Lease.



21510786/20240508/DI/TS