



OVER 60?

Secure this property
for up to **59% less!**

Price
£550,000

Freehold

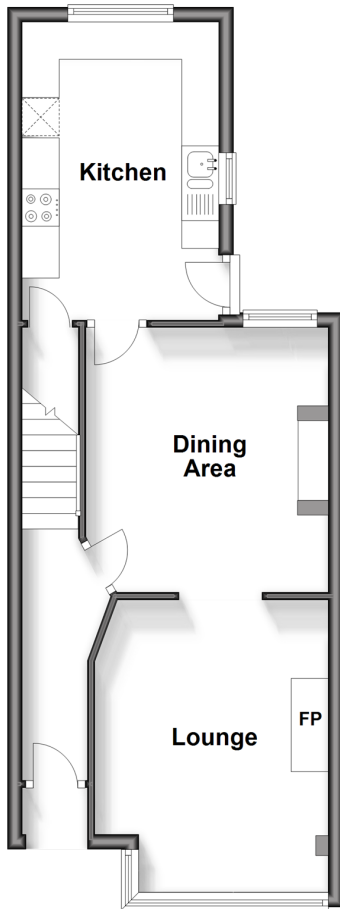
5x  2x  2x 

**Foxley Gardens, Purley,
Surrey, CR8**

cubitt&west
Helping you move forwards

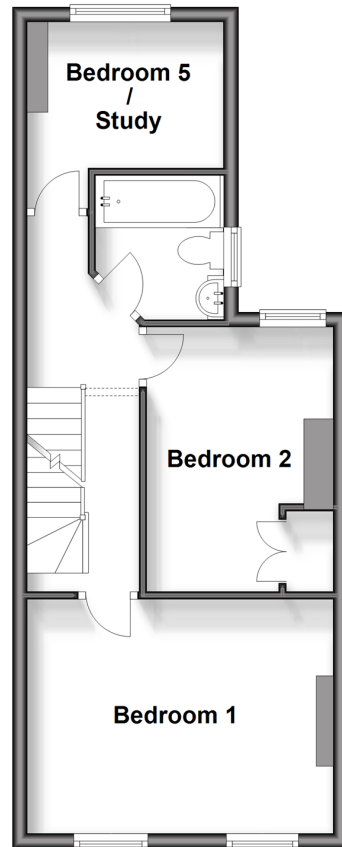
Ground Floor

Approx. 40.8 sq. metres (439.6 sq. feet)



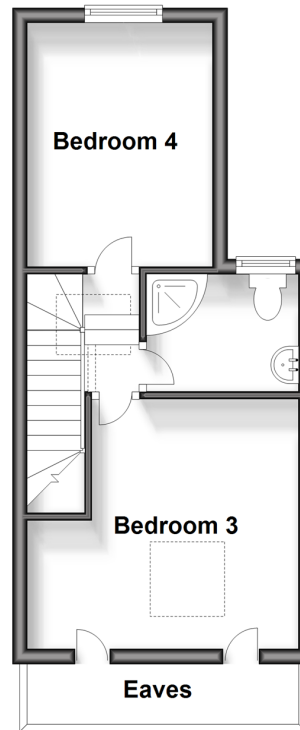
Split Level First Floor

Approx. 39.2 sq. metres (421.5 sq. feet)



Second Floor

Approx. 26.8 sq. metres (289.0 sq. feet)



Accommodation

GROUND FLOOR

Entrance Hall

Lounge : 12'10 x 10'4 (3.91m x 3.15m)

Dining Area: 11'7 x 10'9 (3.53m x 3.28m)

Kitchen: 9'11 x 8'8 (3.02m x 2.64m)

Utility Room

FIRST FLOOR

Landing

Bedroom 1: 13'8 x 10'11 (4.17m x 3.33m)

Bedroom 2: 10'10 x 8'4 (3.30m x 2.54m)

Bathroom

Bedroom 5/Study: 8'8 x 6'7 (2.64m x 2.01m)

SECOND FLOOR

Landing

Bedroom 3: 11'3 x 11'0 (3.43m x 3.36m)

Bedroom 4: 10'9 x 8'3 (3.28m x 2.52m)

Shower Room

OUTSIDE

Front Garden

Rear Garden



Main features

- Stunning Victorian terraced home in popular family area
- 2 bathrooms, large separate dining area and good size modern kitchen
- Period features including feature fireplace
- Set over three floors, a great house for a larger family
- Excellent schools in the area for all ages and walking distance to Purley station



Nearest Schools

Primary Schools: Harris Primary Academy Kenley 0.3 miles, Beaumont Primary 0.5 miles, Christ Church CofE Primary (Purley) 0.8 miles Secondary Schools: Thomas More Catholic School 0.9 miles, Riddlesdown Collegiate 1.0 miles, Tudor Lodge School 1.1 miles



Transport Information

Train Stations: Purley 0.4 miles, Reedham 0.5 miles, Riddlesdown 0.5 miles



Address

Foxley Gardens, Purley, Surrey, CR8



Directions

For directions to this property please contact us.



cubitt&west
Helping you move forwards

Call Purley Branch 020 8660 8882 ■ cubittandwest.co.uk



- A private rental licensing scheme applies to some properties in this area, please contact us before proceeding
- Appliances & services are untested, dimensions are approximate and floor plans are not to scale

- Legal advice should be taken to verify fixtures/fittings, planning, alterations and/or lease details
- Through a Homewise Home For Life Plan people aged 60+ can secure this property for up to 59% less, by purchasing a Lifetime Lease.



21510878/20240406/DI/MS