



Guide Price
£650,000

Freehold

3x  3x  2x 

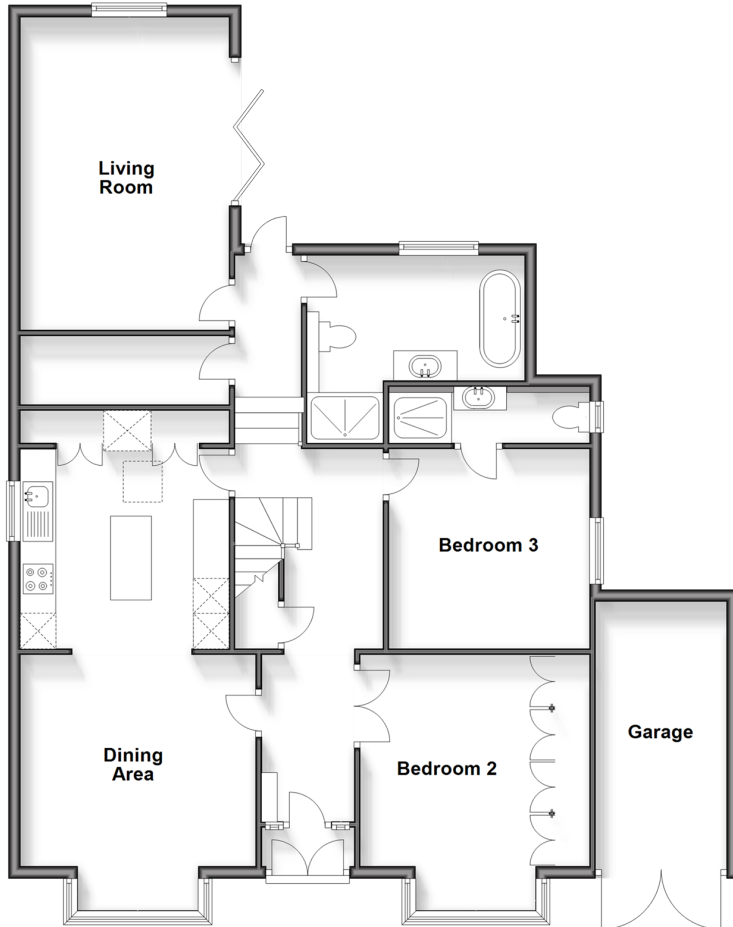
**Old Farleigh Road,
South Croydon, Surrey,
CR2**

OVER 60?

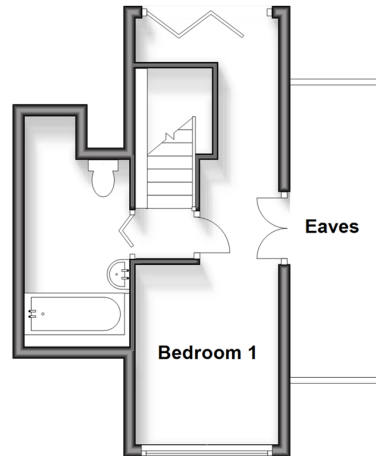
Secure this property
for up to **59% less!**

cubitt&west
Helping you move forwards

Split Level Ground Floor
Approx. 122.3 sq. metres (1316.8 sq. feet)



First Floor
Approx. 23.6 sq. metres (253.7 sq. feet)



Accommodation

GROUND FLOOR

Entrance Hall

Living Room: 16'6 x 12'3 (5.03m x 3.74m)

Kitchen/Diner: 26'1 x 12'5 (7.96m x 3.79m)

Bedroom 3: 12'2 x 10'8 (3.71m x 3.25m)

En-Suite Shower Room

Bedroom 2: 14'7 x 11'1 (4.45m x 3.38m)

Bathroom: 12'3 x 10'4 (3.74m x 3.15m)

FIRST FLOOR

Bedroom 1: 23'0 x 9'1 (7.02m x 2.77m)

En-Suite Bathroom

OUTSIDE

Garage

Driveway

Front Garden

Rear Garden

Summer House

Workshop/Office



Main features

- Stunning chalet bungalow with garage & driveway
- Large kitchen/diner and living room with bi-folding doors to rear garden
- 2 bedrooms have en-suites, modern family bathroom with separate shower
- Good size garden with summer house and separate workshop/office
- Good schools and local amenities



Nearest Schools

Primary Schools: Greenvale Primary 0.1 miles, Selsdon Primary and Nursery School 0.6 miles, Courtwood Primary 0.9 miles Secondary Schools: Croydon High School 0.3 miles, Selsdon High School 0.9 miles, Kingsdown Secondary School 0.9 miles



Transport Information

Train Stations: Sanderstead 1.7 miles, Riddlesdown 1.8 miles, Purley Oaks 2.0 miles



Address

Old Farleigh Road, South Croydon, Surrey, CR2



Directions

For directions to this property please contact us.



cubitt&west
Helping you move forwards

Call Purley Branch 020 8660 8882 ■ cubittandwest.co.uk



- A private rental licensing scheme applies to some properties in this area, please contact us before proceeding
- Appliances & services are untested, dimensions are approximate and floor plans are not to scale

- Legal advice should be taken to verify fixtures/fittings, planning, alterations and/or lease details
- Through a Homewise Home For Life Plan people aged 60+ can secure this property for up to 59% less, by purchasing a Lifetime Lease.



21510906/20240504/DI/TS