



Price

£359,950

Leasehold

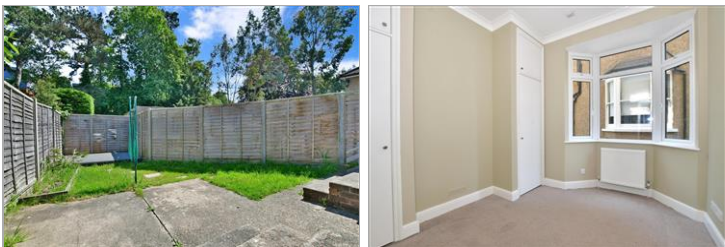
2x  1x  1x 

**Ground Floor Flat, Dale
Road, Purley, Surrey,
CR8**

OVER 60?

Secure this property
for up to **59% less!**

cubitt & west
Helping you move forwards



Main features

- Spacious ground floor maisonette
- Ample storage throughout with fitted wardrobes & access to a private cellar
- Private garden with own garage & additional parking
- In a sought after location within walking distance to Purley train station, shops & amenities

Accommodation

GROUND FLOOR

Entrance Hall

Lounge: 17'3 x 15'7 (5.26m x 4.75m)

Kitchen: 9'8 x 5'8 (2.95m x 1.73m)

Bedroom 1: 17'3 x 11'8 (5.26m x 3.56m)

Bedroom 2: 10'9 x 9'2 (3.28m x 2.80m)

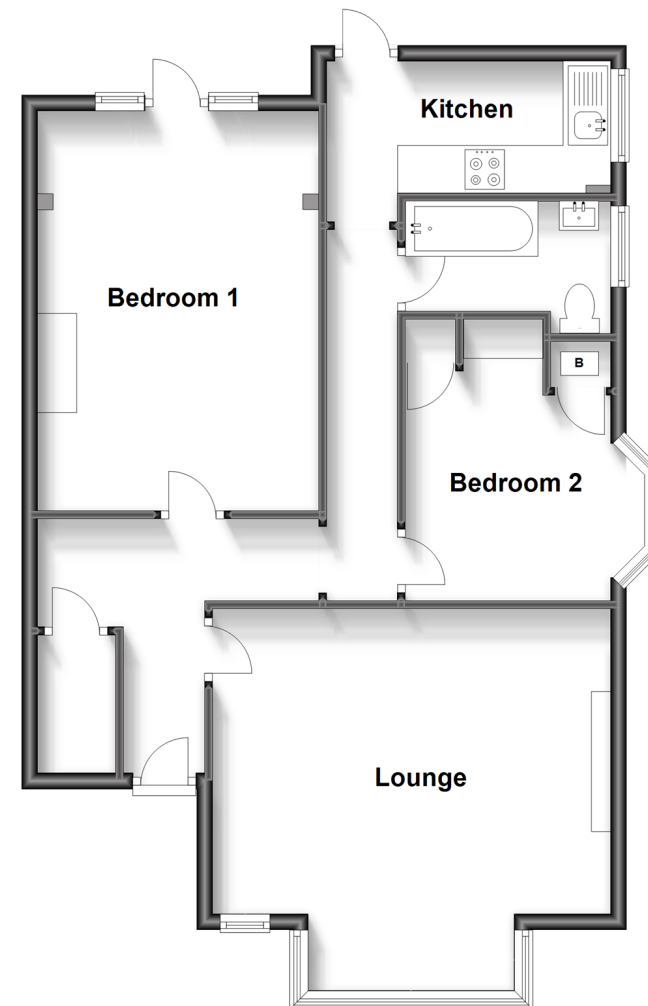
Bathroom: 9'8 x 4'6 (2.95m x 1.37m)

OUTSIDE

Front & Rear Garden

Driveway

Ground Floor
Approx. 74.7 sq. metres (804.5 sq. feet)



Call Purley - 020 8660 8882 ■ cubittandwest.co.uk

- A private rental licensing scheme applies to some properties in this area, please contact us before proceeding
- Legal advice should be taken to verify fixtures/fittings, planning, alterations and/or lease details
- Appliances & services are untested, dimensions are approximate and floor plans are not to scale
- Through a Homewise Home For Life Plan people aged 60+ can secure this property for up to 59% less, by purchasing a Lifetime Lease.



21510970/20230617/DI/TS