



Guide Price
£225,000

Leasehold

2x  1x  1x 

**Brighton Road, Purley,
Surrey, CR2**

cubitt&west
Helping you move forwards



Main features

- Chain free first floor apartment with access to shared terrace
- Some updating required - ideal to put your own stamp on
- Long 160+ lease remaining
- Walking distance to 3 train stations & local shops
- Excellent first time buy or investment opportunity

Accommodation

FIRST FLOOR

Hallway

Kitchen: 11'2 x 9'6 (3.41m x 2.90m)

Bathroom: 7'4 x 5'1 (2.24m x 1.55m)

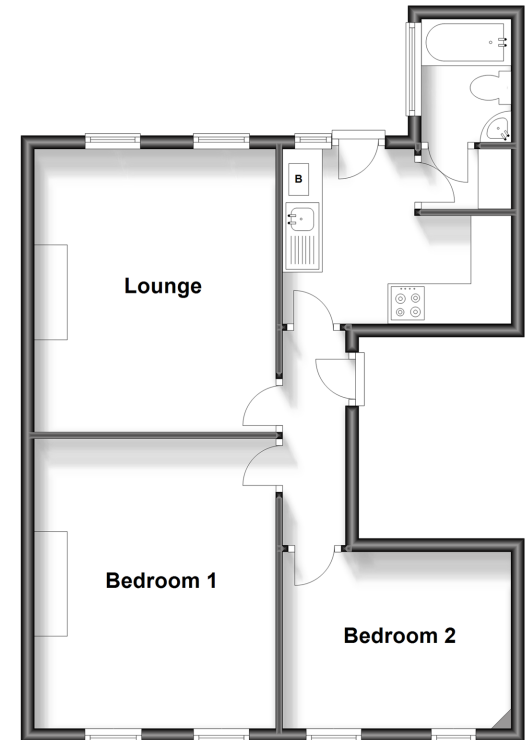
Lounge: 14'6 x 11'9 (4.42m x 3.58m)

Bedroom 1: 11'3 x 10'2 (3.43m x 3.10m)

Bedroom 2: 14'2 x 12'6 (4.32m x 3.81m)

First Floor

Approx. 56.8 sq. metres (611.2 sq. feet)



Call Purley - 020 8660 8882 ■ cubittandwest.co.uk

- A private rental licensing scheme applies to some properties in this area, please contact us before proceeding
- Legal advice should be taken to verify fixtures/fittings, planning, alterations and/or lease details
- Appliances & services are untested, dimensions are approximate and floor plans are not to scale



21511028/20230922/DI/TS