



OVER 60?

Secure this property
for up to **59% less!**

Price

£200,000

Leasehold

1x  1x  1x 

**South End, Croydon,
Surrey, CR0**

cubitt&west
Helping you move forwards



Main features

- Chain free second floor flat
- Requires some updating
- New 150 year lease on completion
- Ideal first time buy or investment opportunity
- Walking distance to 3 stations, shops, bars and restaurants

Accommodation

SECOND FLOOR

Hallway

Lounge: 16'6 x 13'4 (5.03m x 4.07m)

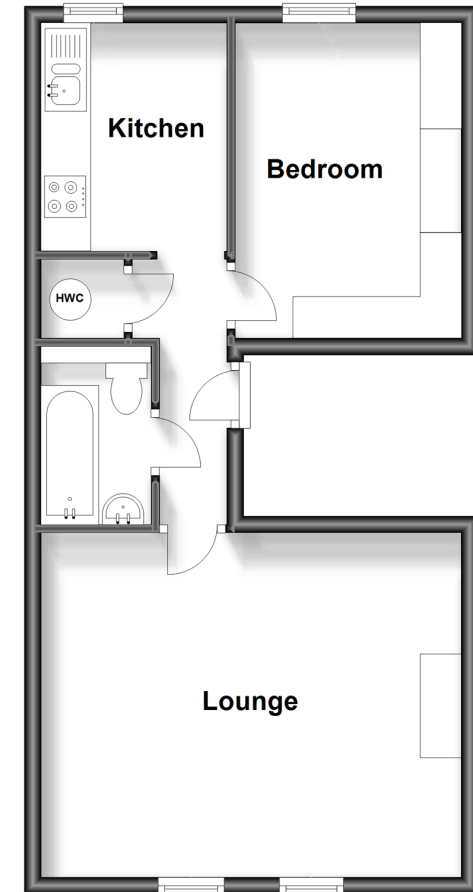
Kitchen: 8'9 x 7'2 (2.67m x 2.19m)

Bedroom: 12'3 x 8'9 (3.74m x 2.67m)

Bathroom

Second Floor

Approx. 45.7 sq. metres (492.2 sq. feet)



Call Purley - 020 8660 8882 ■ cubittandwest.co.uk

- A private rental licensing scheme applies to some properties in this area, please contact us before proceeding
- Legal advice should be taken to verify fixtures/fittings, planning, alterations and/or lease details
- Appliances & services are untested, dimensions are approximate and floor plans are not to scale
- Through a Homewise Home For Life Plan people aged 60+ can secure this property for up to 59% less, by purchasing a Lifetime Lease.



21511031/20230721/DI/TS