



Price
£600,000

Freehold

3x  2x  1x 

**Warham Road, South
Croydon, Surrey, CR2**

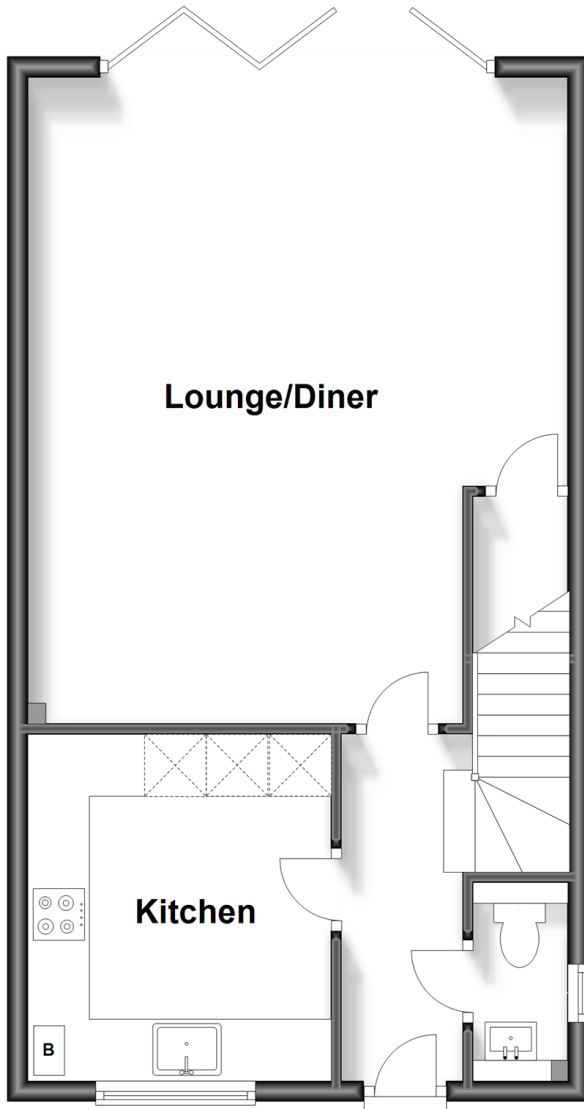
OVER 60?

Secure this property
for up to **59% less!**

cubitt&west
Helping you move forwards

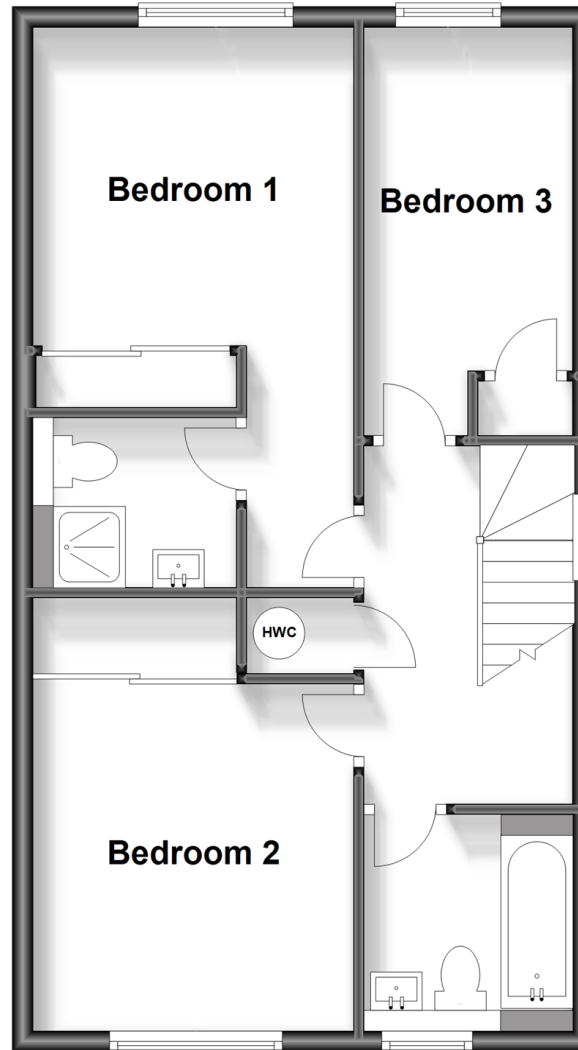
Ground Floor

Approx. 50.9 sq. metres (548.1 sq. feet)



First Floor

Approx. 50.9 sq. metres (548.1 sq. feet)



Accommodation

GROUND FLOOR

Entrance Hall

Cloakroom

Kitchen: 11'6 x 9'4 (3.51m x 2.85m)

Lounge/Diner: 21'2 x 17'3 (6.46m x 5.26m)

FIRST FLOOR

Landing

Bedroom 1: 18'2 x 10'1 (5.54m x 3.08m)

En-Suite Shower Room: 7'3 x 5'4 (2.21m x 1.63m)

Bedroom 2: 11'2 x 10'7 (3.41m x 3.23m)

Bedroom 3: 14'3 x 6'9 (4.35m x 2.06m)

Bathroom: 8'6 x 7'1 (2.59m x 2.16m)

OUTSIDE

Allocated Parking Space

Rear Garden

Front Garden



Main features

- Beautiful modern & spacious, secluded semi-detached home in gated development
- Only built 3 years ago, 7 years warranty remaining, solar panels
- Large lounge/diner with bi-folds to garden
- Allocated parking space with electric charging point
- Underfloor heating throughout ground floor
- Good size rear garden with patio



Nearest Schools

Primary Schools: Duppas Junior School 0.2 miles, Howard Primary 0.2 miles, Regina Coeli Catholic Primary 0.4 miles
Secondary Schools: Whitgift School 0.2 miles, St Giles School 0.4 miles, St Andrew's CofE Voluntary Aided High School 0.5 miles



Transport Information

Train Stations: South Croydon 0.4 miles, Waddon 0.6 miles, Purley Oaks 0.9 miles



Address

Warham Road, South Croydon, Surrey, CR2



Directions

For directions to this property please contact us.



cubitt&west
Helping you move forwards

Call Purley Branch 020 8660 8882 ■ cubittandwest.co.uk



- A private rental licensing scheme applies to some properties in this area, please contact us before proceeding
- Appliances & services are untested, dimensions are approximate and floor plans are not to scale

- Legal advice should be taken to verify fixtures/fittings, planning, alterations and/or lease details
- Through a Homewise Home For Life Plan people aged 60+ can secure this property for up to 59% less, by purchasing a Lifetime Lease.



21511045/20231018/DI/TS