



OVER 60?

Secure this property
for up to **59% less!**

Price

£400,000

Freehold

2x  2x  1x 

**Hamond Close, South
Croydon, Surrey, CR2**

cubitt&west
Helping you move forwards



Main features

- Modern end of terrace home with 2 bathrooms
- Good size conservatory area
- Fitted wardrobes in both bedrooms
- Allocated parking space
- Walking distance to 3 stations
- Good schools for all ages under 0.5 miles

Accommodation

GROUND FLOOR

Entrance Hall
Cloakroom
Kitchen: 10'6 x 7'3 (3.20m x 2.21m)
Lounge/Diner: 26'5 x 12'6 (8.06m x 3.81m)
Conservatory Area

FIRST FLOOR

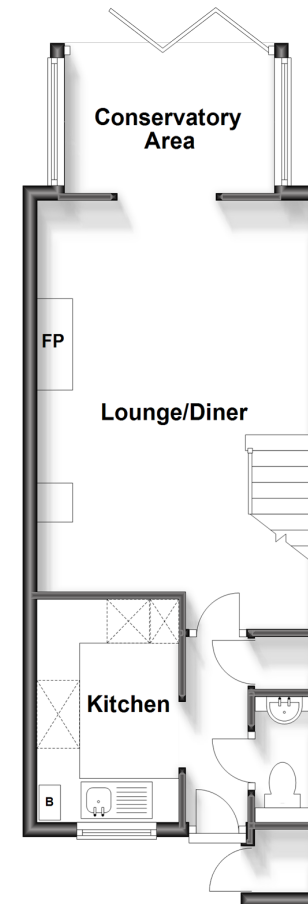
Landing
Bedroom 1: 13'3 x 9'9 (4.04m x 2.97m)
En-Suite Shower Room
Bedroom 2: 10'4 x 9'9 (3.15m x 2.97m)
Bathroom

OUTSIDE

Allocated Parking Space
Front Garden
Rear Garden

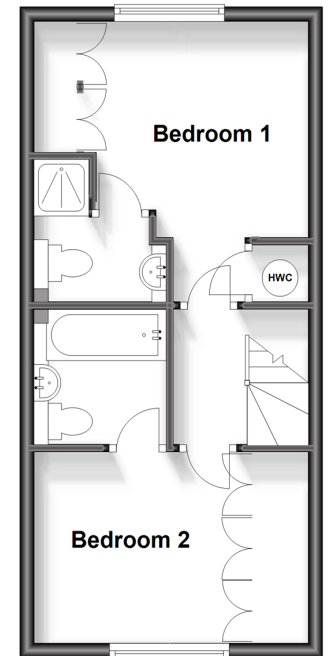
Ground Floor

Approx. 38.5 sq. metres (414.3 sq. feet)



First Floor

Approx. 32.8 sq. metres (352.5 sq. feet)



Call Purley - 020 8660 8882 ■ cubittandwest.co.uk

- A private rental licensing scheme applies to some properties in this area, please contact us before proceeding
- Legal advice should be taken to verify fixtures/fittings, planning, alterations and/or lease details
- Appliances & services are untested, dimensions are approximate and floor plans are not to scale
- Through a Homewise Home For Life Plan people aged 60+ can secure this property for up to 59% less, by purchasing a Lifetime Lease.



21511057/20230915/TS/TS