



OVER 60?

Secure this property
for up to **59% less!**

Price

£230,000

Leasehold

1x  1x  1x 

**Brighton Road, Purley,
Surrey, CR8**

cubitt&west
Helping you move forwards



Main features

- Bright & spacious second floor apartment
- Private loft space and off street parking
- Rear private garden section
- Walking distance to Purley & Reedham stations
- Hive gas central heating system with individual room thermostats

Accommodation

SECOND FLOOR

Landing

Lounge/Diner: 13'6 x 12'2 (4.12m x 3.71m)

Kitchen: 16'6 x 9'6 (5.03m x 2.90m)

Bedroom: 19'2 x 12'5 (5.85m x 3.79m)

Bathroom: 15'9 x 7'6 (4.80m x 2.29m)

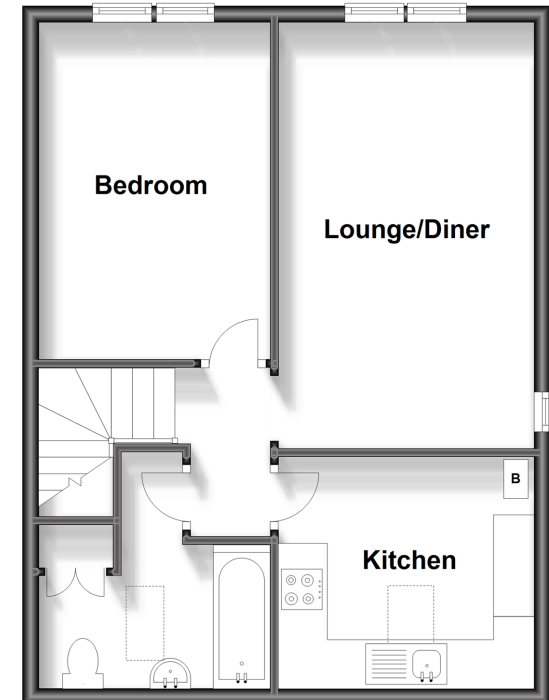
OUTSIDE

Off Street Parking

Private Garden Section

Second Floor

Approx. 50.1 sq. metres (538.8 sq. feet)



Call Purley - 020 8660 8882 ■ cubittandwest.co.uk

- A private rental licensing scheme applies to some properties in this area, please contact us before proceeding
- Legal advice should be taken to verify fixtures/fittings, planning, alterations and/or lease details
- Appliances & services are untested, dimensions are approximate and floor plans are not to scale
- Through a Homewise Home For Life Plan people aged 60+ can secure this property for up to 59% less, by purchasing a Lifetime Lease.



21511064/20240325/MS/MS