



Price

£95,000

Leasehold

1x  1x  1x 

**Azalea Court,
Whytecliffe Road South,
Purley, Surrey, CR8**

cubitt&west
Helping you move forwards



Main features

- Chain free third floor retirement apartment
- Central Purley location, 2 minutes to Purley station
- Lovely communal gardens & visitor's parking
- Lift access and recently re-decorated
- Long lease - 150+ years

Accommodation

THIRD FLOOR

Entrance Hall

Lounge: 18'8 x 11'6 (5.69m x 3.51m)

Kitchen: 8'3 x 8'1 (2.52m x 2.47m)

Bedroom: 14'2 x 8'5 (4.32m x 2.57m)

Bathroom

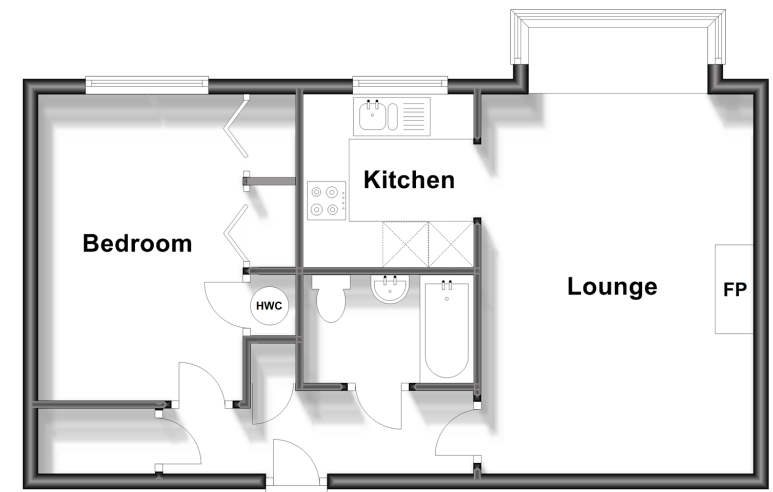
OUTSIDE

Communal Gardens

Visitor's Parking

Third Floor

Approx. 48.2 sq. metres (519.1 sq. feet)



Call Purley - 020 8660 8882 ■ cubittandwest.co.uk

- A private rental licensing scheme applies to some properties in this area, please contact us before proceeding
- Legal advice should be taken to verify fixtures/fittings, planning, alterations and/or lease details
- Appliances & services are untested, dimensions are approximate and floor plans are not to scale



21511070/20230912/DI/TS