



**Price**

**£330,000**

**Leasehold**

1x  1x  1x 

**Malan Apartments, Old  
Lodge Lane, Purley,  
Surrey, CR8**

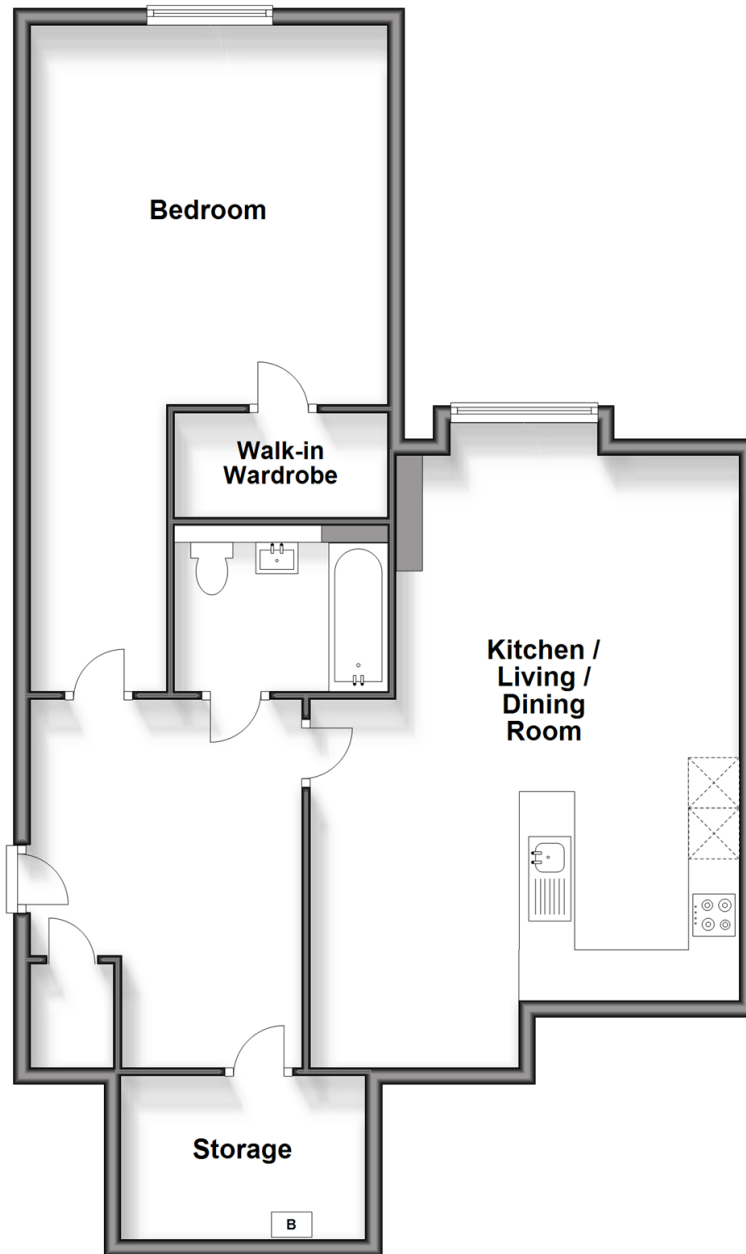
**OVER 60?**

Secure this property  
for up to **59% less!**

**cubitt&west**  
Helping you move forwards

## Second Floor

Approx. 87.0 sq. metres (936.2 sq. feet)



## Accommodation

### SECOND FLOOR

Entrance Hall: 14'2 x 10'7 (4.32m x 3.23m)

Kitchen/Living/Dining: 23'7 x 16'7 (7.19m x 5.06m)

Bedroom: 25'8 x 13'8 (7.83m x 4.17m)

Walk-in Wardrobe

Bathroom: 8'1 x 7'1 (2.47m x 2.16m)

### OUTSIDE

Allocated Parking Space

Private Rear Garden





## Main features

- Stunning large second floor apartment with glazed atrium-style stairwells
- Beautifully presented - move straight in and enjoy
- 245 years on lease remaining
- Allocated parking & private rear garden
- Walk-in wardrobe & large hallway storage cupboard
- Walking distance to Reedham station



### Nearest Schools

Primary Schools: The Wattenden Primary 0.3 miles, Beaumont Primary 0.4 miles, Kenley Primary 1.3 miles  
Secondary Schools: Woodcote High School 1.8 miles, The John Fisher School 1.8 miles, Warlingham School 2.0 miles



### Transport Information

Train Stations: Reedham 0.6 miles, Purley 1.1 miles, Woodmansterne 1.6 miles



### Address

Malan Apartments, Old Lodge Lane, Purley, Surrey, CR8



### Directions

For directions to this property please contact us.





**cubitt&west**  
Helping you move forwards

Call Purley Branch 020 8660 8882 ■ [cubittandwest.co.uk](https://cubittandwest.co.uk)



- A private rental licensing scheme applies to some properties in this area, please contact us before proceeding
- Appliances & services are untested, dimensions are approximate and floor plans are not to scale

- Legal advice should be taken to verify fixtures/fittings, planning, alterations and/or lease details
- Through a Homewise Home For Life Plan people aged 60+ can secure this property for up to 59% less, by purchasing a Lifetime Lease.



21511079/20240205/D1/MS