



Price

£240,000

Leasehold

1x  1x  1x 

**Spencer Road, South
Croydon, Surrey, CR2**

OVER 60?

Secure this property
for up to **59% less!**

cubitt&west
Helping you move forwards



Main features

- Large first floor split level Victorian conversion apartment
- Garage and allocated parking
- Communal gardens
- Short walking distance to South Croydon station and Lloyd Park Tramlink
- Ideal first time buy or investment opportunity

Accommodation

FIRST FLOOR

Hallway

Living Room: 13'5 x 13'0 (4.09m x 3.97m)

Kitchen: 13'4 x 7'1 (4.07m x 2.16m)

Bedroom: 13'1 x 10'8 (3.99m x 3.25m)

Bathroom: 9'3 x 7'4 (2.82m x 2.24m)

OUTSIDE

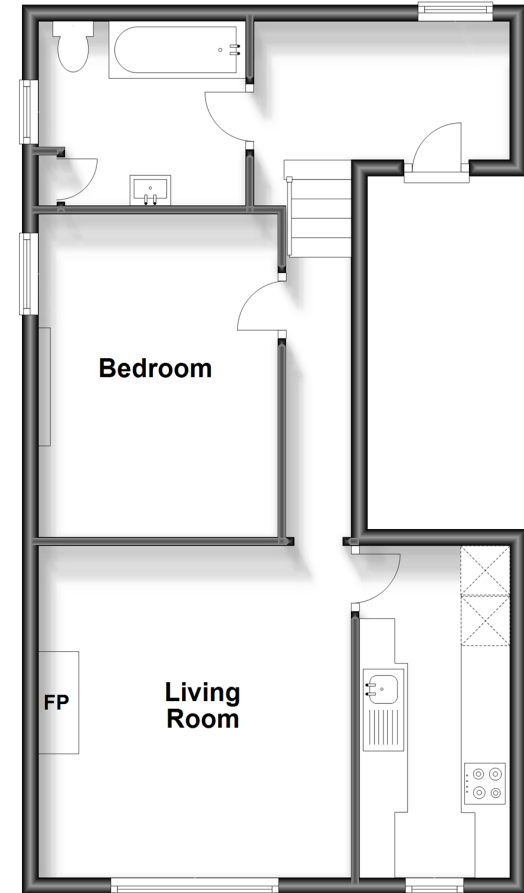
Communal Gardens

Garage

Allocated Parking Space

Split Level First Floor

Approx. 51.4 sq. metres (553.5 sq. feet)



Call Purley - 020 8660 8882 ■ cubittandwest.co.uk

- A private rental licensing scheme applies to some properties in this area, please contact us before proceeding
- Legal advice should be taken to verify fixtures/fittings, planning, alterations and/or lease details
- Appliances & services are untested, dimensions are approximate and floor plans are not to scale
- Through a Homewise Home For Life Plan people aged 60+ can secure this property for up to 59% less, by purchasing a Lifetime Lease.



21511085/20231007/DI/TS