



Price
£220,000

Leasehold

1x  1x  1x 

**High Street, Purley,
Surrey, CR8**

OVER 60?

Secure this property
for up to **59% less!**

cubitt&west
Helping you move forwards



Main features

- Ground floor apartment in central Purley
- 5 minute walk to Purley station
- Allocated parking space
- Communal gardens and private rear patio
- Ideal first time buy or investment opportunity
- Potential to put your own stamp on

Accommodation

GROUND FLOOR

Hallway

Living Room: 15'4 x 10'10 (4.68m x 3.30m)

Kitchen: 10'9 x 6'5 (3.28m x 1.96m)

Bedroom: 12'7 x 9'10 (3.84m x 3.00m)

Bathroom: 7'1 x 6'5 (2.16m x 1.96m)

OUTSIDE

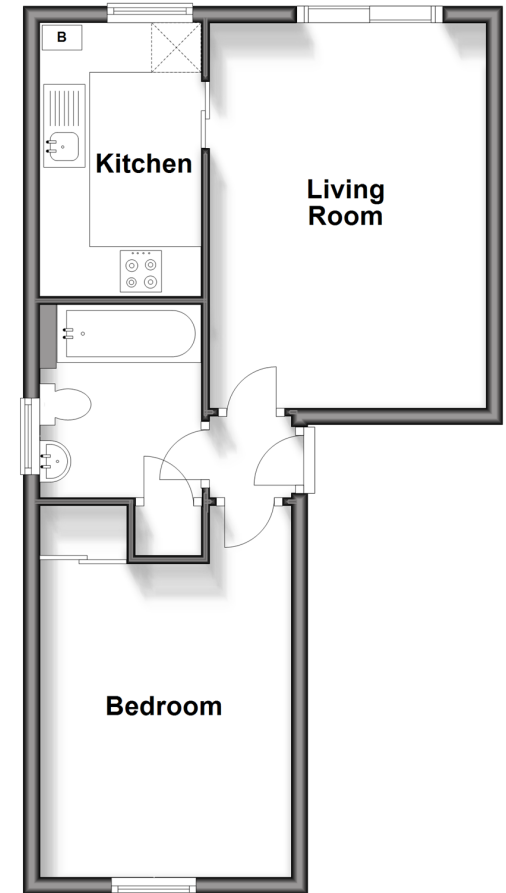
Communal Gardens

Private Rear Patio

Allocated Parking Space

Ground Floor

Approx. 42.0 sq. metres (451.9 sq. feet)



Call Purley - 020 8660 8882 ■ cubittandwest.co.uk

- A private rental licensing scheme applies to some properties in this area, please contact us before proceeding
- Legal advice should be taken to verify fixtures/fittings, planning, alterations and/or lease details
- Appliances & services are untested, dimensions are approximate and floor plans are not to scale
- Through a Homewise Home For Life Plan people aged 60+ can secure this property for up to 59% less, by purchasing a Lifetime Lease.



21511144/20240110/DI/TS