



Price

£75,000

Leasehold

1x  1x  0x 

**Holmgrove House,
Brighton Road, Purley,
Surrey, CR8**

cubitt&west
Helping you move forwards



Main features

- Recently refurbished ground floor retirement studio for the over 55's
- Residents lounge, laundry facilities & car park
- Lovely communal grounds
- 2 good size storage cupboards
- Walking distance to Purley station & Tesco Superstore

Accommodation

GROUND FLOOR

Hallway

Living/Dining/Bedroom Area: 21'9 x 10'2 (6.63m x 3.10m)

Kitchen: 8'8 x 6'3 (2.64m x 1.91m)

Shower Room: 7'4 x 6'1 (2.24m x 1.86m)

Storage Cupboard x 2

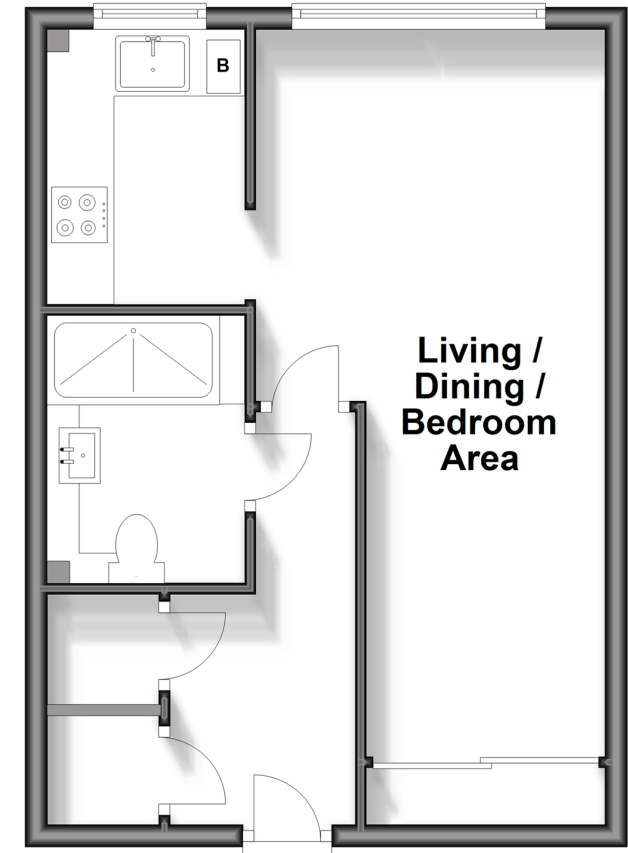
OUTSIDE

Communal Gardens

Car Park

Ground Floor

Approx. 35.9 sq. metres (386.5 sq. feet)



Call Purley - 020 8660 8882 ■ cubittandwest.co.uk

- A private rental licensing scheme applies to some properties in this area, please contact us before proceeding
- Legal advice should be taken to verify fixtures/fittings, planning, alterations and/or lease details
- Appliances & services are untested, dimensions are approximate and floor plans are not to scale



21511196/20240226/DI/MS