



Price

£550,000

Freehold

3x  1x  2x 

**Reddown Road,
Coulsdon, Surrey, CR5**

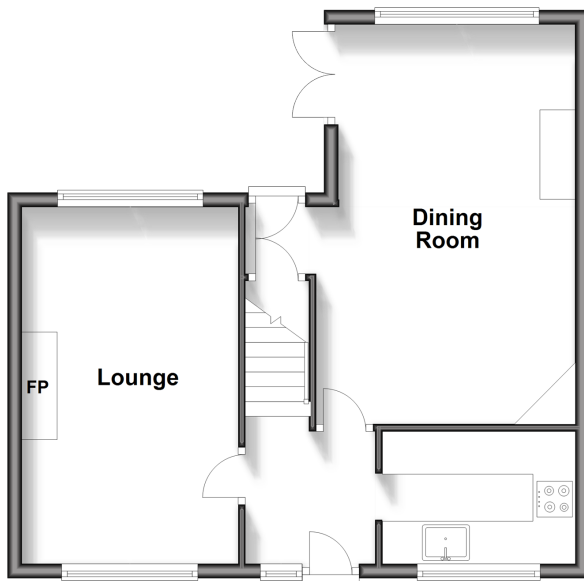
OVER 60?

Secure this property
for up to **59% less!**

cubitt & west
Helping you move forwards

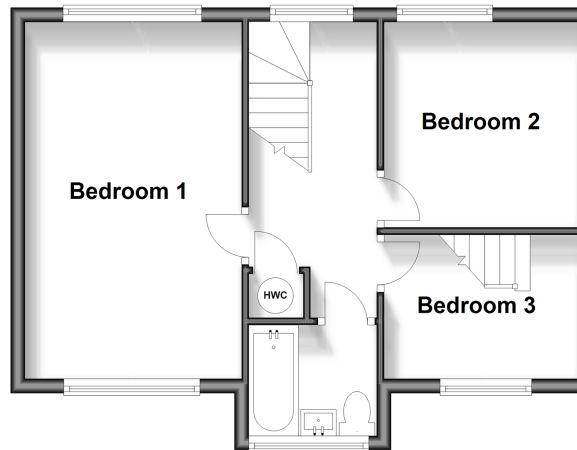
Ground Floor

Approx. 47.3 sq. metres (509.0 sq. feet)



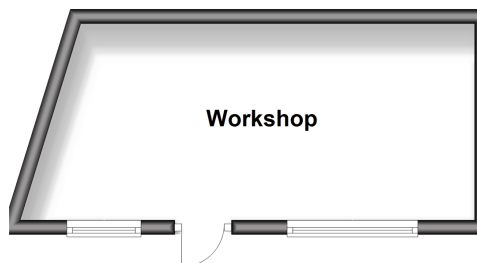
First Floor

Approx. 40.4 sq. metres (434.4 sq. feet)



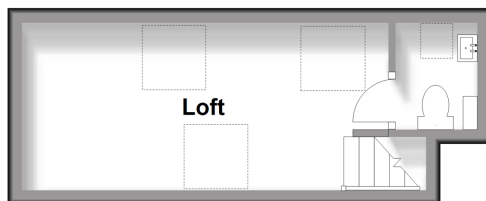
Outbuilding

Approx. 16.4 sq. metres (177.0 sq. feet)



Second Floor

Approx. 14.4 sq. metres (154.8 sq. feet)



Accommodation

GROUND FLOOR

Entrance Hall

Kitchen: 9'6 x 6'2 (2.90m x 1.88m)

Dining Room: 18'2 x 15'1 (5.54m x 4.60m)

Lounge: 16'4 x 10'0 (4.98m x 3.05m)

FIRST FLOOR

Landing

Bedroom 1: 16'3 x 10'1 (4.96m x 3.08m)

Bedroom 2: 9'4 x 8'9 (2.85m x 2.67m)

Bedroom 3: 8'9 x 6'6 (2.67m x 1.98m)

Bathroom

SECOND FLOOR

Loft Room: 16'7 x 7'7 (5.06m x 2.31m)

Cloakroom

OUTSIDE

Front Garden

Rear Garden

Driveway

OUT BUILDING

Workshop



Main features

- Semi-detached family home with driveway
- Extra loft room with cloakroom
- 2 minutes walk to Coulsdon South train station - ideal if you commute
- Rear level garden with covered BBQ area, workshop and lots of basement storage
- Nestled in a sought after residential road within walking distance of open green spaces
- Walking distance to several primary schools



Nearest Schools

Primary Schools: Byron Primary 0.4 miles, Smitham Primary 0.5 miles, St Aidan's Catholic Primary 0.5 miles
Secondary Schools: Woodcote High School 1.1 miles, Coulsdon High School 1.4 miles, Oasis Academy - Coulsdon 1.4 miles



Transport Information

Train Stations: Coulsdon South 0.0 miles, Coulsdon Town 0.4 miles, Woodmansterne 0.7 miles



Address

Reddown Road, Coulsdon, Surrey, CR5



Directions

For directions to this property please contact us.



cubitt&west
Helping you move forwards

Call Purley Branch 020 8660 8882 ■ cubittandwest.co.uk



- A private rental licensing scheme applies to some properties in this area, please contact us before proceeding
- Appliances & services are untested, dimensions are approximate and floor plans are not to scale

- Legal advice should be taken to verify fixtures/fittings, planning, alterations and/or lease details
- Through a Homewise Home For Life Plan people aged 60+ can secure this property for up to 59% less, by purchasing a Lifetime Lease.



21511217/20240330/DI/MS