



**Price**  
**£750,000**

**Freehold**

3x  2x  3x 

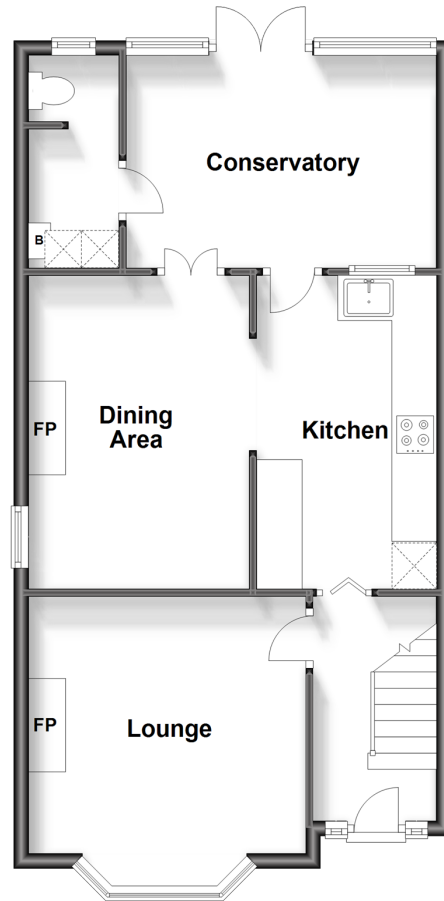
**Somerset Road,  
Meadvale, Surrey, RH1**

**OVER 60?**

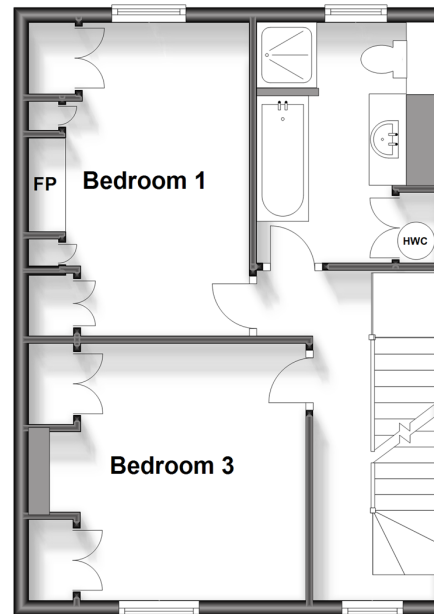
Secure this property  
for up to **59% less!**

**cubitt&west**  
Helping you move forwards

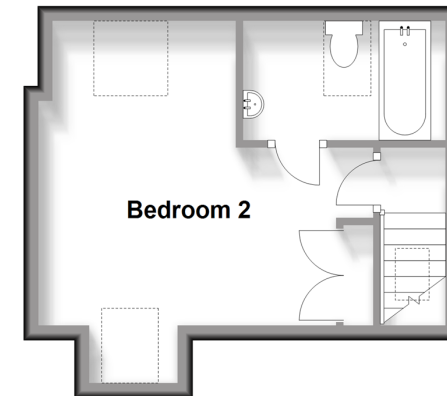
**Ground Floor**  
Approx. 58.3 sq. metres (627.3 sq. feet)



**First Floor**  
Approx. 42.6 sq. metres (458.1 sq. feet)



**Second Floor**  
Approx. 23.1 sq. metres (248.9 sq. feet)



## Accommodation

### GROUND FLOOR

Entrance Hall: 11'0 x 5'0 (3.36m x 1.53m)  
Lounge: 13'3 x 12'3 (4.04m x 3.74m)  
Dining Area: 13'8 x 9'8 (4.17m x 2.95m)  
Kitchen: 13'8 x 8'0 (4.17m x 2.44m)  
Conservatory: 13'8 x 10'3 (4.17m x 3.13m)  
Utility Room / Cloakroom: 9'4 x 3'7 (2.85m x 1.09m)

### FIRST FLOOR

Landing: 13'0 x 5'0 (3.97m x 1.53m)  
Bedroom 1: 14'0 x 11'0 (4.27m x 3.36m)  
Bedroom 3: 11'9 x 11'7 (3.58m x 3.53m)  
Bathroom: 10'7 x 7'8 (3.23m x 2.34m)

### SECOND FLOOR

Landing  
Bedroom 2: 15'8 x 13'3 (4.78m x 4.04m)  
Ensuite Bathroom: 8'7 x 5'3 (2.62m x 1.60m)

### OUTSIDE

Front Garden  
Driveway for 3 Cars  
Rear Garden





## Main features

- Attractive and spacious, 3 storey Victorian house in a sought after location
- Many original features including fireplaces
- Family bathroom and en-suite bathroom
- Sunny conservatory, a long and pretty rear garden
- Large driveway with space for 3 cars
- Close to Redhill, Reigate, excellent local schools and train stations



### Nearest Schools

Primary Schools: St John's Primary 0.8 miles, Reigate Priory Community Junior School 1.1 miles, Holmesdale Community Infant School 1.3 miles  
Secondary Schools: Dunottar School 0.8 miles, Reigate School 0.9 miles, Reigate Grammar School 1.2 miles



### Transport Information

Train Stations: Earlswood 1.2 miles, Reigate 1.5 miles, Redhill 1.7 miles



### Address

Somerset Road, Meadvale, Surrey, RH1



### Directions

For directions to this property please contact us.





**cubitt&west**  
Helping you move forwards

Call Reigate Branch 01737 222020 ■ [cubittandwest.co.uk](https://cubittandwest.co.uk)



■ Legal advice should be taken to verify fixtures/fittings, planning, alterations and/or lease details ■ Appliances & services are untested, dimensions are approximate and floor plans are not to scale  
■ Through a Homewise Home For Life Plan people aged 60+ can secure this property for up to 59% less, by purchasing a Lifetime Lease.



21605186/20231110/JB1/JB1