



Price
£325,000

**Share of
Freehold**

2x  1x  1x 

**Doran Gardens, Doran
Drive, Reigate, Surrey,
RH1**

OVER 60?

Secure this property
for up to **59% less!**

cubitt&west
Helping you move forwards



Main features

- Bright and airy top floor apartment
- Tree-lined private residential cul-de-sac
- Balcony overlooking communal gardens
- Mostly boarded loft with ladder
- Located on borders of Reigate and Redhill within easy access to mainline station

Accommodation

TOP FLOOR

Entrance Hall

Lounge/Diner: 16'3 x 12'5 (4.96m x 3.79m)

Kitchen: 9'11 x 8'3 (3.02m x 2.52m)

Bedroom 1: 16'0 x 11'5 (4.88m x 3.48m)

Balcony

Bedroom 2: 12'9 x 10'0 (3.89m x 3.05m)

Bathroom

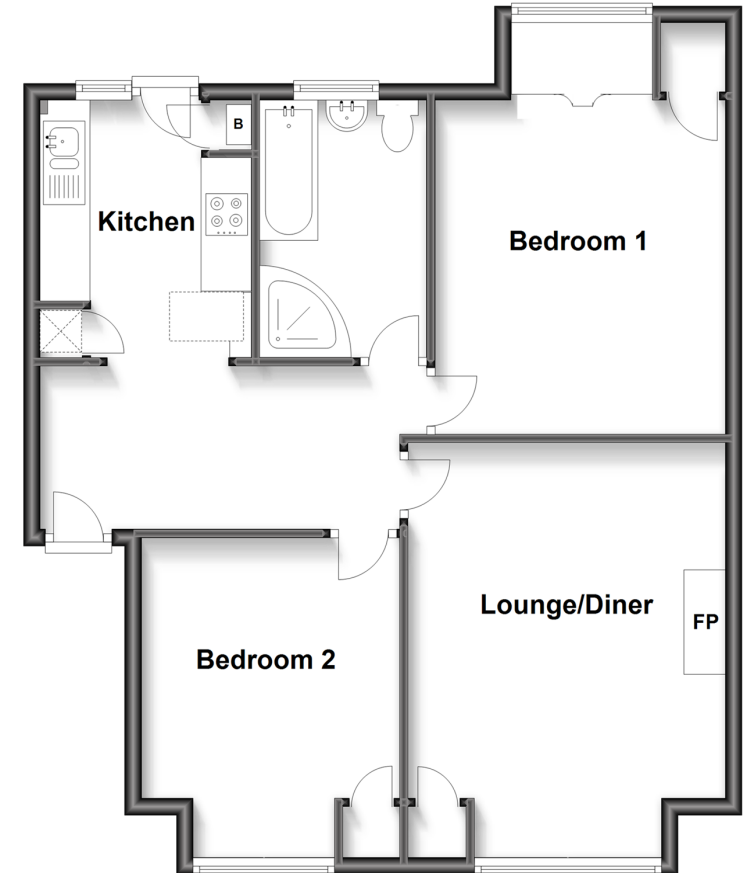
OUTSIDE

Communal Gardens

Off Road Parking

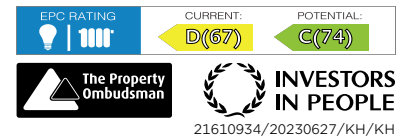
Top Floor

Approx. 71.6 sq. metres (770.7 sq. feet)



Call Reigate - 01737 222020 ■ cubittandwest.co.uk

- Legal advice should be taken to verify fixtures/fittings, planning, alterations and/or lease details
- Appliances & services are untested, dimensions are approximate and floor plans are not to scale
- Through a Homewise Home For Life Plan people aged 60+ can secure this property for up to 59% less, by purchasing a Lifetime Lease.



21610934/20230627/KH/KH