



Guide Price

£230,000

Leasehold

1x  1x  1x 

**Linden Court, Lesbourne
Road, Reigate, Surrey,
RH2**

OVER 60?

Secure this property
for up to **59% less!**

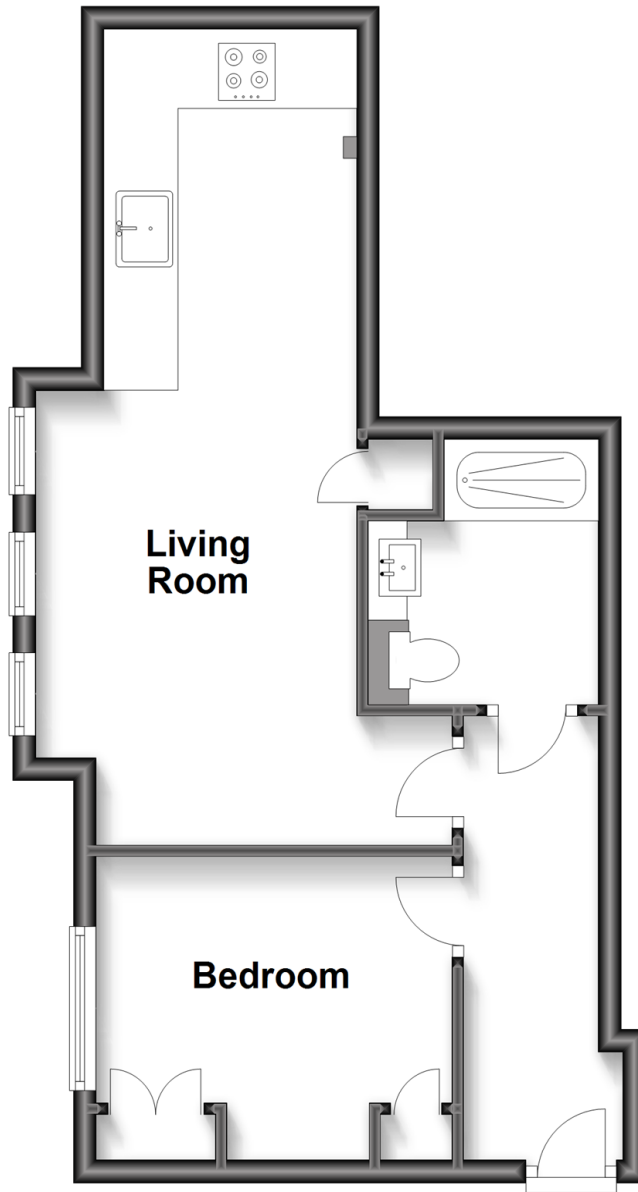


Video Tour available

cubitt&west
Helping you move forwards

Second Floor

Approx. 38.1 sq. metres (410.1 sq. feet)



Accommodation

SECOND FLOOR

Entrance Hall: 8'7 x 4'7 (2.62m x 1.40m)

Living Room: 13'6 x 9'2 (4.12m x 2.80m)

Kitchen Area: 9'7 x 6'5 (2.92m x 1.96m)

Bedroom : 10'3 x 8'7 (3.13m x 2.62m)

Bathroom: 7'6 x 5'5 (2.29m x 1.65m)

OUTSIDE

Allocated Parking

Communal Gardens



Main features

- Price Guide £230,000-£250,000
- Attractive & immaculate apartment
- High quality kitchen with built in appliances, luxury bathroom
- Allocated parking with barrier access
- Long lease, no chain
- Superb elevated views over Memorial Gardens
- Town centre location, short walk to shops & train station



Nearest Schools

Primary Schools: Reigate Priory Community Junior School 0.1 miles, Holmesdale Community Infant School 0.7 miles, Sandcross School 0.8 miles
Secondary Schools: Reigate Grammar School 0.4 miles, Dunottar School 0.8 miles, Reigate School 0.8 miles



Transport Information

Train Stations: Reigate 0.4 miles, Earlswood 1.4 miles, Redhill 1.6 miles



Address

Linden Court, Lesbourne Road, Reigate, Surrey, RH2



Directions

For directions to this property please contact us.



cubitt&west
Helping you move forwards

Call Reigate Branch 01737 222020 ■ cubittandwest.co.uk



■ Legal advice should be taken to verify fixtures/fittings, planning, alterations and/or lease details ■ Appliances & services are untested, dimensions are approximate and floor plans are not to scale
■ Through a Homewise Home For Life Plan people aged 60+ can secure this property for up to 59% less, by purchasing a Lifetime Lease.



21612709/20240227/NF1/JB1