



Price

£319,995

Leasehold

3x  1x  1x 

**Clayhall House, Somers
Close, Reigate, Surrey,
RH2**

OVER 60?

Secure this property
for up to **59% less!**

cubitt&west
Helping you move forwards



Main features

- A very spacious apartment on a gated development
- Flexible accommodation, could use a bedroom as a second living space
- Modern fitted kitchen & bathroom
- Private parking, garage en-bloc & communal gardens
- Great location, just a short walk to the train station & town centre

Accommodation

FIRST FLOOR

Entrance Hall

Lounge/Dining Room: 20'3 x 12'6
(6.18m x 3.81m)

Kitchen: 10'9 x 7'5 (3.28m x 2.26m)

Bedroom 1: 13'5 x 7'5 (4.09m x 2.26m)

Bedroom 2: 8'9 x 8'1 (2.67m x 2.47m)

Bedroom 3: 7'5 x 7'3 (2.26m x 2.21m)

Bathroom: 7'4 x 6'4 (2.24m x 1.93m)

OUTSIDE

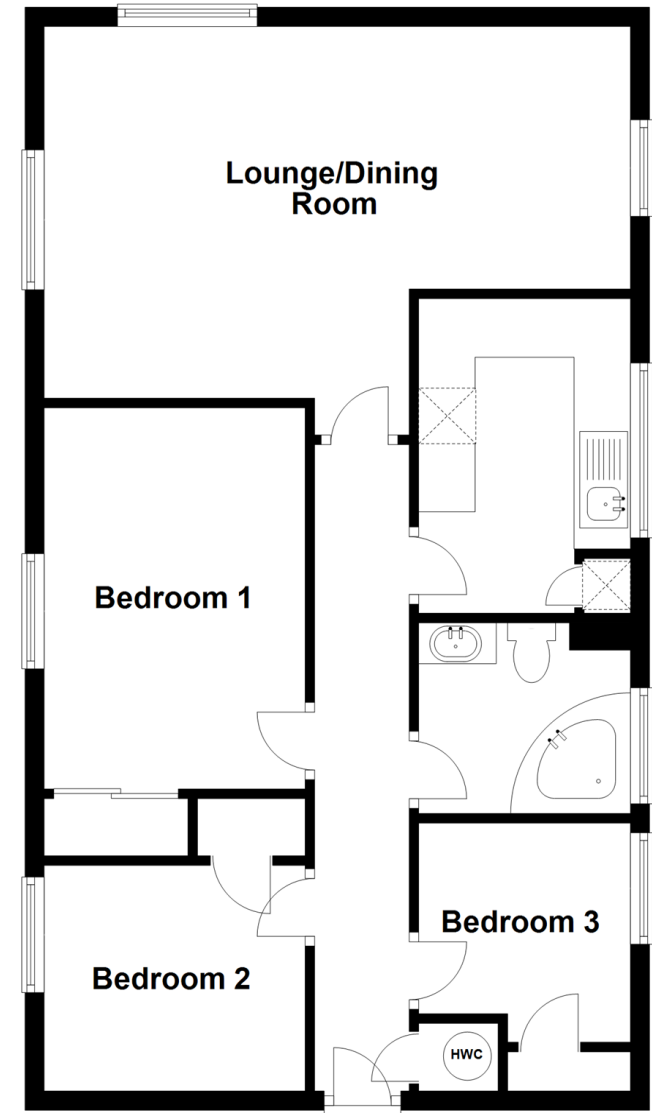
Private Parking

Garage En-Bloc

Communal Gardens

First Floor

Approx. 67.5 sq. metres (726.9 sq. feet)



Call Reigate - 01737 222020 ■ cubittandwest.co.uk

- Legal advice should be taken to verify fixtures/fittings, planning, alterations and/or lease details
- Appliances & services are untested, dimensions are approximate and floor plans are not to scale
- Through a Homewise Home For Life Plan people aged 60+ can secure this property for up to 59% less, by purchasing a Lifetime Lease.



21612887/20221118/JB/JB