



**Price**

**£140,000**

**Leasehold**

1x  1x  1x 

**Ridings Court, Prices  
Lane, Reigate, Surrey,  
RH2**

**cubitt&west**  
Helping you move forwards





## Main features

- Retirement apartment for the over 60's
- Modern kitchen & shower room
- 24 hour care line system, Resident Manager
- Communal lounge area, communal gardens & parking
- Close to bus stop & local shops
- Short drive to Reigate town centre

## Accommodation

### FIRST FLOOR

Entrance Hall

Lounge/Dining Room: 17'5 x 10'10  
(5.31m x 3.30m)

Kitchen: 7'6 x 7'0 (2.29m x 2.14m)

Bedroom : 13'3 up to fitted wardrobes x 9'10 (4.04m x 3.00m)

Shower Room: 7'0 x 5'7 (2.14m x 1.70m)

### OUTSIDE

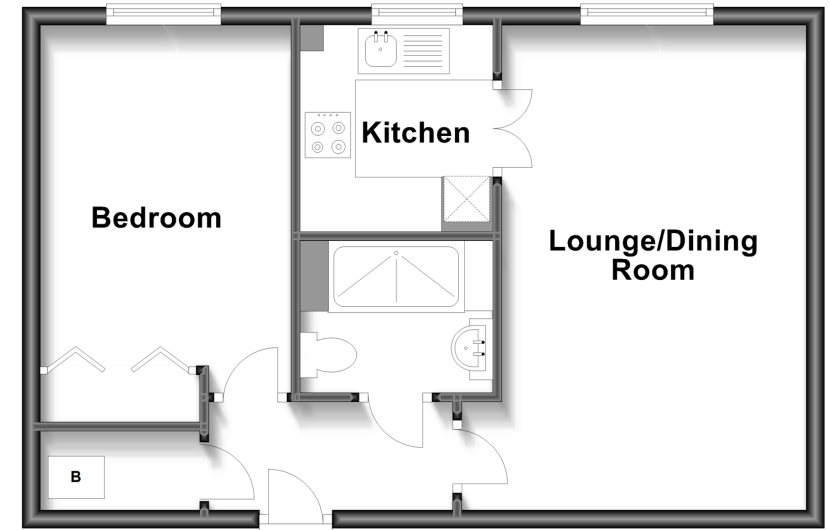
Communal Gardens

Communal Resident Parking

Visitor Parking

## First Floor

Approx. 44.9 sq. metres (483.5 sq. feet)



**Call Reigate - 01737 222020 ■ [cubittandwest.co.uk](http://cubittandwest.co.uk)**

- Legal advice should be taken to verify fixtures/fittings, planning, alterations and/or lease details
- Appliances & services are untested, dimensions are approximate and floor plans are not to scale



21612916/20240416/JB1/JB1