



Guide Price
£130,000

Leasehold

1x  1x  1x 

**Ridings Court, Prices
Lane, Reigate, Surrey,
RH2**

OVER 60?

Secure this property
for up to **59% less!**



Video Tour available

cubitt&west
Helping you move forwards



Main features

- A retirement apartment for the over 60's
- Bright & airy lounge/dining room with views over the communal gardens
- Lift to all floors, resident's lounge, communal laundry & a guest suite
- Within easy reach of local amenities
- No onward chain

Accommodation

FIRST FLOOR

Entrance Hall

Lounge/Dining Room: 19'1 x 10'8
(5.82m x 3.25m)

Kitchen: 8'6 x 5'7 (2.59m x 1.70m)

Bedroom: 15'3 x 8'9 (4.65m x 2.67m)

Shower Room: 6'9 x 5'4 (2.06m x 1.63m)

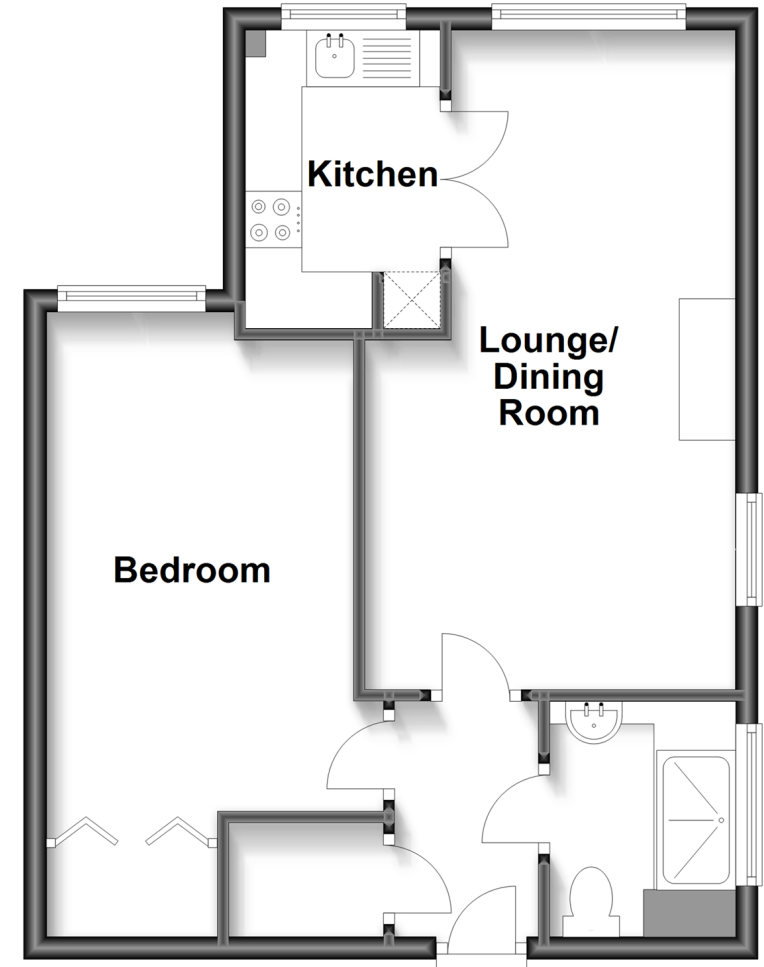
OUTSIDE

Off Road Parking

Communal Gardens

First Floor

Approx. 44.5 sq. metres (479.5 sq. feet)



Call Reigate - 01737 222020 ■ cubittandwest.co.uk

- Legal advice should be taken to verify fixtures/fittings, planning, alterations and/or lease details
- Appliances & services are untested, dimensions are approximate and floor plans are not to scale
- Through a Homewise Home For Life Plan people aged 60+ can secure this property for up to 59% less, by purchasing a Lifetime Lease.



21612957/20240410/JB1/KH