



**Price**

**£120,000**

**Leasehold**

1x  1x  1x 

**Churchfield Court,  
Roebuck Close, Reigate,  
Surrey, RH2**



Video Tour available

**cubitt&west**  
Helping you move forwards





## Main features

- A modern retirement apartment for the over 65's, with private terrace
- Recently redecorated & new carpets
- Communal gardens, resident & visitor parking
- Residents sitting area, laundry room, on-site Manager, emergency support & disabled access
- No chain, investors can buy as rental

## Accommodation

### GROUND FLOOR

Entrance Hall

Lounge/Diner: 17'5 x 10'6 (5.31m x 3.20m)

Kitchen: 7'3 x 5'4 (2.21m x 1.63m)

Bedroom : 14'1 x 8'8 (4.30m x 2.64m)

Shower Room: 6'8 x 5'4 (2.03m x 1.63m)

### OUTSIDE

Private Terrace

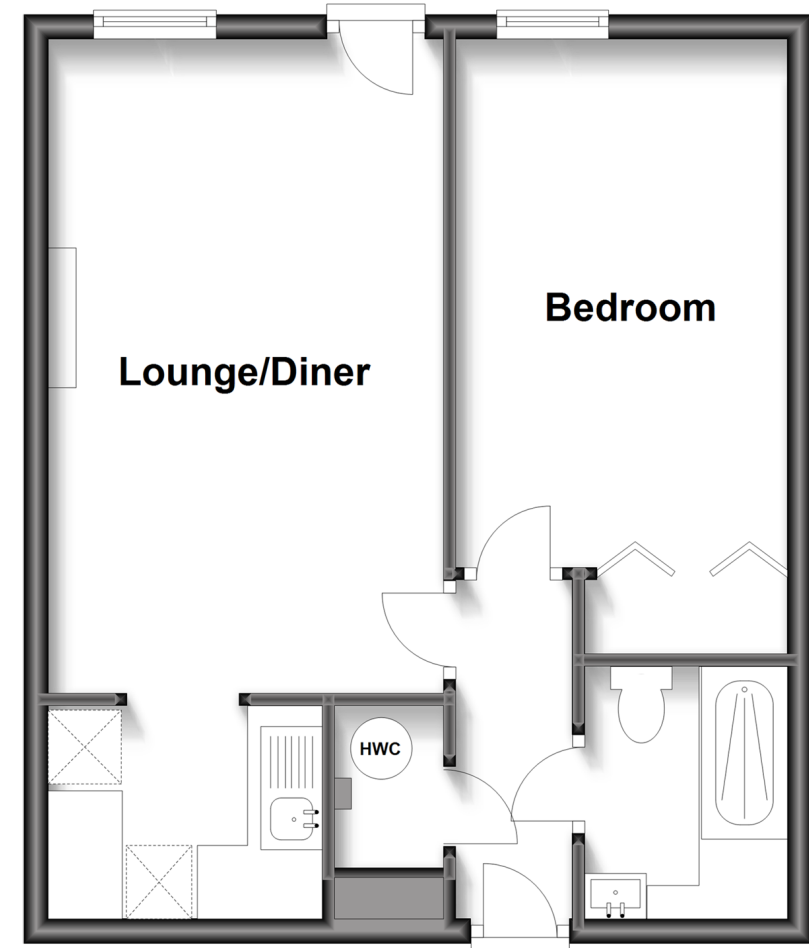
Communal Gardens

Resident Parking

Visitor Parking

## Ground Floor

Approx. 43.0 sq. metres (462.7 sq. feet)



**Call Reigate - 01737 222020 ■ [cubittandwest.co.uk](http://cubittandwest.co.uk)**

- Legal advice should be taken to verify fixtures/fittings, planning, alterations and/or lease details
- Appliances & services are untested, dimensions are approximate and floor plans are not to scale



21613057/20230206/NP/JB