



Guide Price
£450,000

Freehold

3x  1x  2x 

**Yeats Close, Redhill,
Surrey, RH1**



Video Tour available

cubitt&west
Helping you move forwards



Main features

- Guide Price £450,000-£475,000
- A spacious end of terrace house
- Modern kitchen & shower room
- Gas central heating, double glazing
- Potential for 2 storey side extension (subject to planning permission)
- Front, side & rear garden, garage-en-bloc
- No onward chain

Accommodation

GROUND FLOOR

Entrance Hall

Kitchen: 12'1 x 7'6 (3.69m x 2.29m)

Lounge: 15'5 x 10'4 (4.70m x 3.15m)

Dining Room: 12'2 x 8'7 (3.71m x 2.62m)

Cloakroom

FIRST FLOOR

Landing

Bedroom 1: 13'8 x 9'9 (4.17m x 2.97m)

Bedroom 2: 12'0 x 10'0 (3.66m x 3.05m)

Bedroom 3: 10'2 x 6'8 (3.10m x 2.03m)

Shower Room: 6'7 x 5'6 (2.01m x 1.68m)

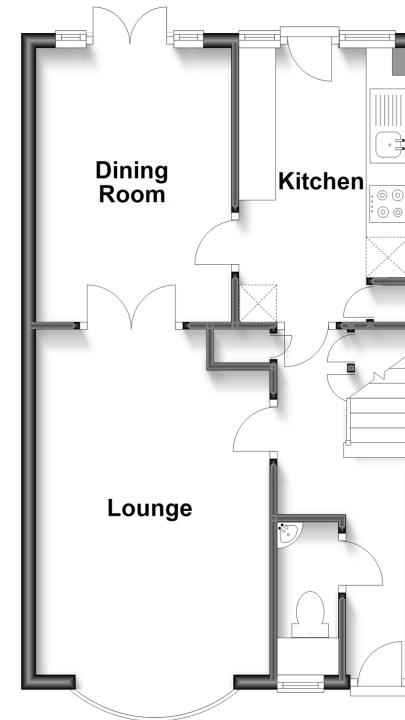
OUTSIDE

Front, Side & Rear Garden

Garage-en-Bloc

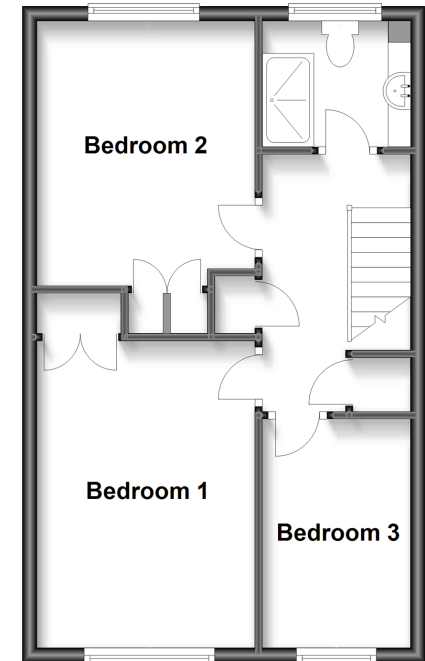
Ground Floor

Approx. 43.2 sq. metres (465.5 sq. feet)



First Floor

Approx. 42.9 sq. metres (462.2 sq. feet)



Call Reigate - 01737 222020 ■ cubittandwest.co.uk

- Legal advice should be taken to verify fixtures/fittings, planning, alterations and/or lease details
- Appliances & services are untested, dimensions are approximate and floor plans are not to scale



21613085/20230706/NF1/JB1