



Price

£315,000

Leasehold

2x  1x  1x 

**Wanmer Court,
Birkheads Road,
Reigate, RH2**

OVER 60?

Secure this property
for up to **59% less!**



Video Tour available

cubitt&west
Helping you move forwards



Main features

- Spacious, light & airy apartment
- Gated development, communal garden, 2 parking spaces
- Gas central heating & double glazing
- Excellent location, opposite the train station & a short walk to town centre
- No onward chain
- Ideal for first time buyers/investors, professional couple & young families

Accommodation

FIRST FLOOR

Entrance Hall

Lounge/Diner: 18'7 x 13'9 (5.67m x 4.19m)

Kitchen: 9'10 x 6'8 (3.00m x 2.03m)

Bedroom 1: 14'8 x 9'11 (4.47m x 3.02m)

Bedroom 2: 10'9 x 6'10 (3.28m x 2.08m)

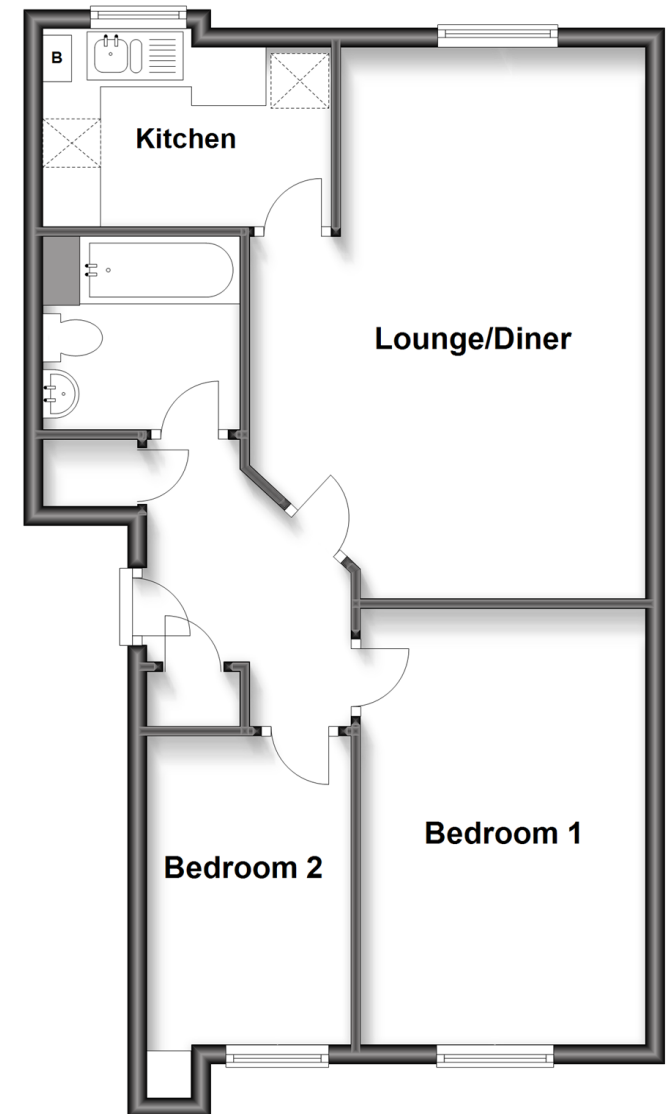
Bathroom: 6'8 x 6'8 (2.03m x 2.03m)

OUTSIDE

Parking for 2 Cars
Communal Garden

First Floor

Approx. 59.8 sq. metres (643.6 sq. feet)



Call Reigate - 01737 222020 ■ cubittandwest.co.uk

- Legal advice should be taken to verify fixtures/fittings, planning, alterations and/or lease details
- Appliances & services are untested, dimensions are approximate and floor plans are not to scale
- Through a Homewise Home For Life Plan people aged 60+ can secure this property for up to 59% less, by purchasing a Lifetime Lease.



21613086/20230403/NP/KH