



**Price**

**£550,000**

**Freehold**

3x  1x  2x 

**Summerly Avenue,  
Reigate, Surrey, RH2**

**OVER 60?**

Secure this property  
for up to **59% less!**



**Video Tour available**

**cubitt&west**  
Helping you move forwards



## Main features

- A spacious end of terraced house
- Flexible accommodation (study could be used as a dining room)
- Double glazed, gas central heating, modern shower room
- Scope for fourth bedroom, subject to planning permission
- Garage-en-bloc, short walk to town, station & excellent schools

## Accommodation

### GROUND FLOOR

Entrance Hall

Lounge: 19'0 x 12'6 (5.80m x 3.81m)

Dining Area: 11'0 x 11'0 (3.36m x 3.36m)

Kitchen: 9'0 x 7'0 (2.75m x 2.14m)

Study : 11'6 x 8'0 (3.51m x 2.44m)

Cloakroom

### FIRST FLOOR

Landing

Bedroom 1: 12'6 x 10'0 (3.81m x 3.05m)

Bedroom 2: 12'0 x 9'6 (3.66m x 2.90m)

Bedroom 3: 10'5 x 6'9 (3.18m x 2.06m)

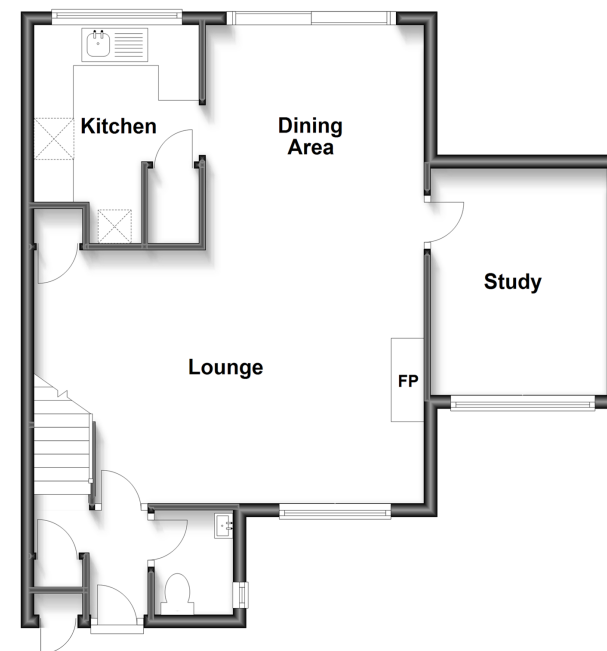
Shower Room: 7'8 x 6'4 (2.34m x 1.93m)

### OUTSIDE

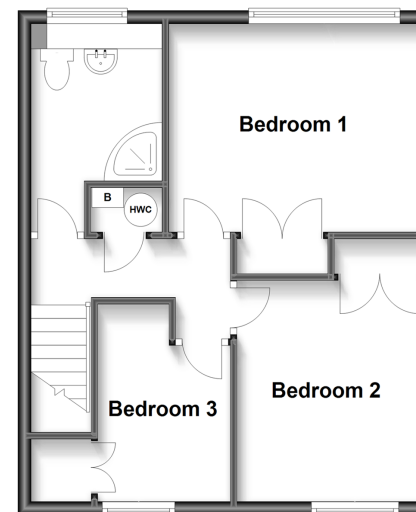
Front, Side & Rear Garden

Garage-en-Bloc

**Ground Floor**  
Approx. 56.8 sq. metres (611.9 sq. feet)



**First Floor**  
Approx. 43.7 sq. metres (470.1 sq. feet)



**Call Reigate - 01737 222020 ■ [cubittandwest.co.uk](http://cubittandwest.co.uk)**

- Legal advice should be taken to verify fixtures/fittings, planning, alterations and/or lease details
- Appliances & services are untested, dimensions are approximate and floor plans are not to scale
- Through a Homewise Home For Life Plan people aged 60+ can secure this property for up to 59% less, by purchasing a Lifetime Lease.



21613092/20230126/NF1/JB