



**Price**  
**£350,000**

**Share of  
Freehold**

2x  1x  1x 

**Eversfield Court,  
Reigate Road, Reigate,  
Surrey, RH2**

**OVER 60?**

Secure this property  
for up to **59% less!**



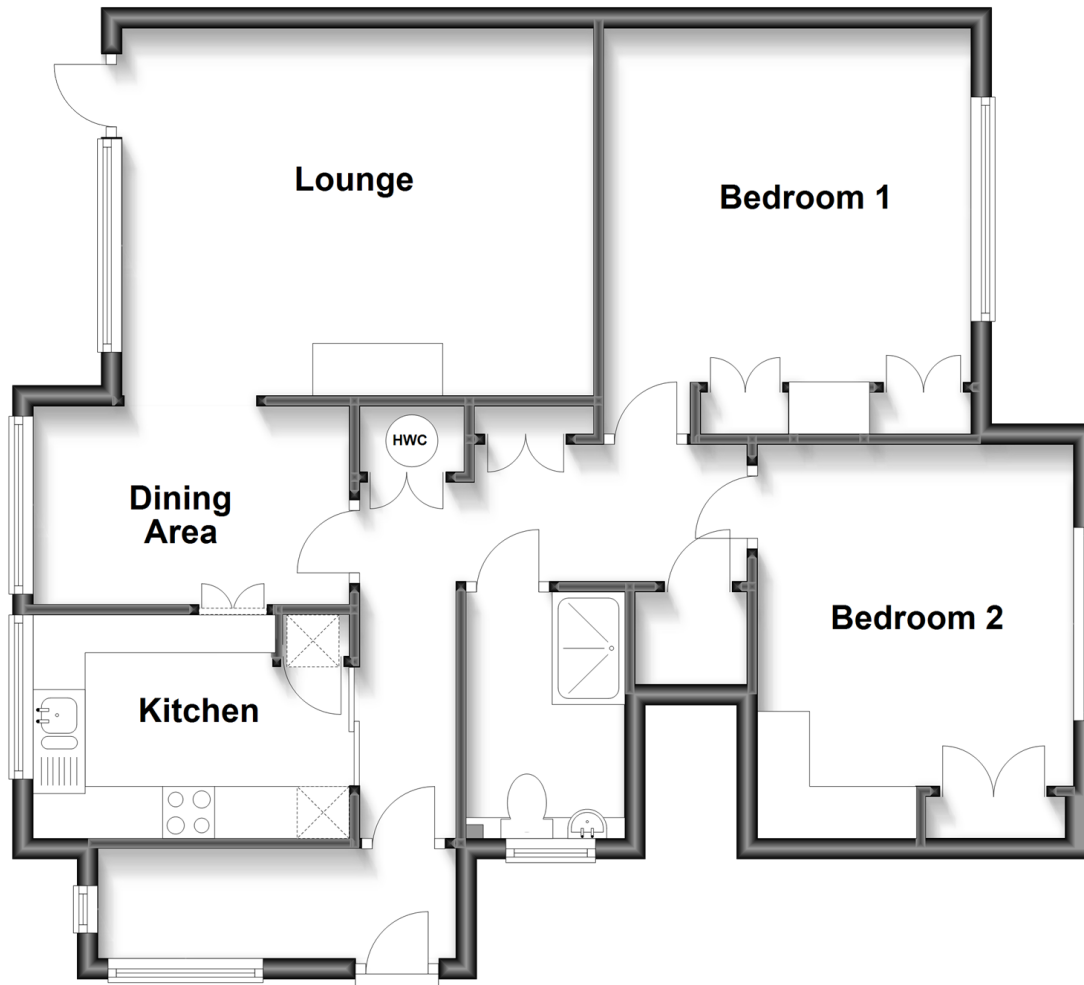
Video Tour available

**cubitt&west**  
Helping you move forwards



## Ground Floor

Approx. 73.0 sq. metres (785.7 sq. feet)



## Accommodation

### GROUND FLOOR

Entrance Porch: 10'0 x 3'6 (3.05m x 1.07m)

Entrance Hall

Kitchen: 10'0 x 7'0 (3.05m x 2.14m)

Dining Area: 10'0 x 6'4 (3.05m x 1.93m)

Lounge: 15'0 x 10'4 (4.58m x 3.15m)

Bedroom 1: 12'9 x 11'6 (3.89m x 3.51m)

Bedroom 2: 12'5 x 10'0 (3.79m x 3.05m)

Shower Room: 7'7 x 5'0 (2.31m x 1.53m)

### OUTSIDE

Allocated Parking

Private Terrace

Communal Gardens

Brick Store: 6'0 x 6'0 (1.83m x 1.83m)



## Main features

- A spacious, immaculate ground floor apartment, no onward chain
- Set in a private position with terrace
- Allocated parking & communal gardens
- Modern kitchen, shower room, parquet flooring
- Short walk to Reigate & Redhill town centres, schools & train station



### Nearest Schools

Primary Schools: Reigate Priory Community Junior School 0.7 miles, St Joseph's Catholic Primary, Redhill 0.8 miles, St Matthew's CofE Primary 1.1 miles  
Secondary Schools: Reigate Grammar School 0.1 miles, Dunottar School 0.7 miles, Cornfield School 1.7 miles



### Transport Information

Train Stations: Reigate 0.9 miles, Earlswood 1.5 miles, Redhill 1.5 miles



### Address

Eversfield Court, Reigate Road, Reigate, Surrey, RH2



### Directions

For directions to this property please contact us.





**cubitt&west**  
Helping you move forwards

Call Reigate Branch 01737 222020 ■ [cubittandwest.co.uk](https://cubittandwest.co.uk)



■ Legal advice should be taken to verify fixtures/fittings, planning, alterations and/or lease details ■ Appliances & services are untested, dimensions are approximate and floor plans are not to scale  
■ Through a Homewise Home For Life Plan people aged 60+ can secure this property for up to 59% less, by purchasing a Lifetime Lease.



21613100/20230915/NF1/JB1