



Price
£340,000

**Share of
Freehold**

2x  1x  1x 

**Clairville Court, Wray
Common Road, Reigate,
Surrey, RH2**

OVER 60?

Secure this property
for up to **59% less!**

cubitt&west
Helping you move forwards



Main features

- Bright & airy apartment in a gated development
- Spacious lounge with a dining area
- Direct access onto immaculate communal grounds
- Garage-en-bloc & off road parking
- Located between Reigate & Redhill towns & mainline train stations

Accommodation

GROUND FLOOR

Entrance Hall

Lounge: 21'0 x 12'8 (6.41m x 3.86m)

Kitchen/Breakfast Area: 12'7 x 8'2 (3.84m x 2.49m)

Dining Area: 7'1 x 5'11 (2.16m x 1.80m)

Inner Hall

Bedroom 1: 13'10 x 12'7 (4.22m x 3.84m)

Bedroom 2: 11'1 x 6'10 (3.38m x 2.08m)

Bathroom (no bath in situ): 6'11 x 5'5 (2.11m x 1.65m)

OUTSIDE

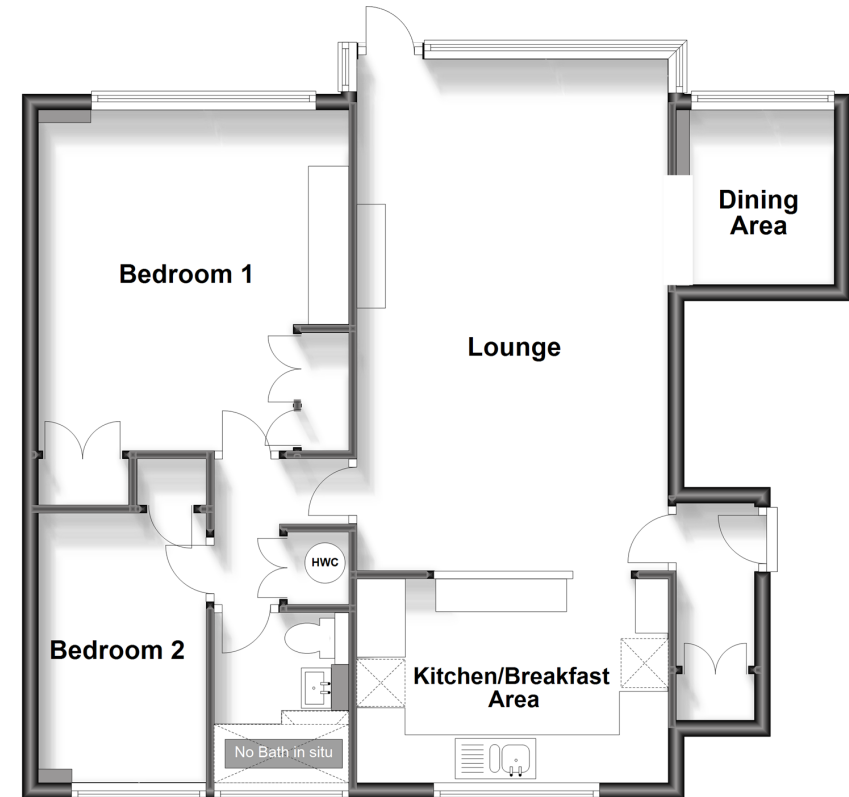
Communal Grounds

Off Road Parking

Garage-en-Bloc

Ground Floor

Approx. 76.2 sq. metres (820.4 sq. feet)



Call Reigate - 01737 222020 ■ cubittandwest.co.uk

- Legal advice should be taken to verify fixtures/fittings, planning, alterations and/or lease details
- Appliances & services are untested, dimensions are approximate and floor plans are not to scale
- Through a Homewise Home For Life Plan people aged 60+ can secure this property for up to 59% less, by purchasing a Lifetime Lease.



21613118/20231004/JB1/KH