

OVER 60?

Secure this property
for up to **59% less!**



Price

£610,000

Freehold

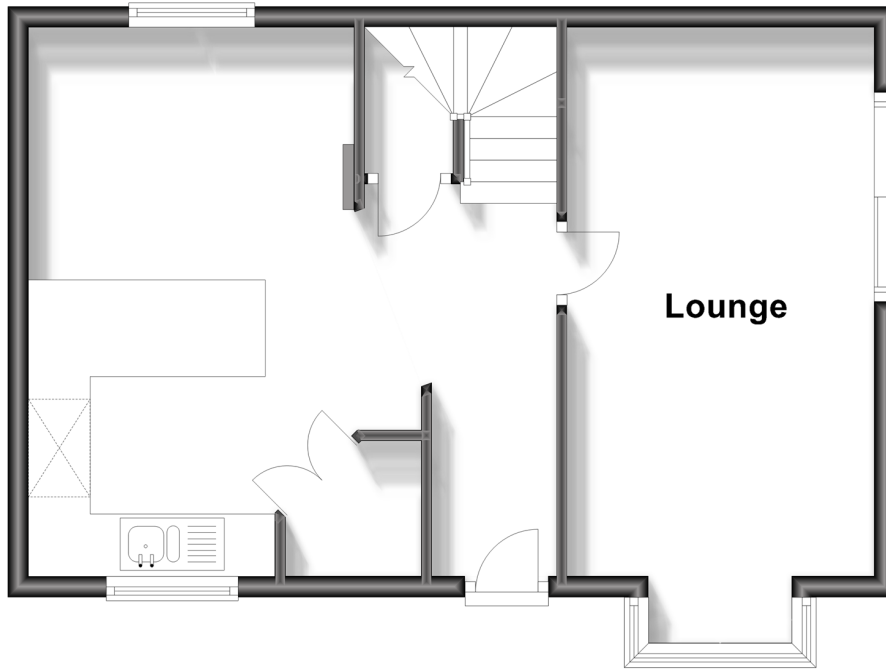
3x  1x  1x 

Nuthatch Gardens, Reigate, Surrey, RH2

cubitt&west
Helping you move forwards

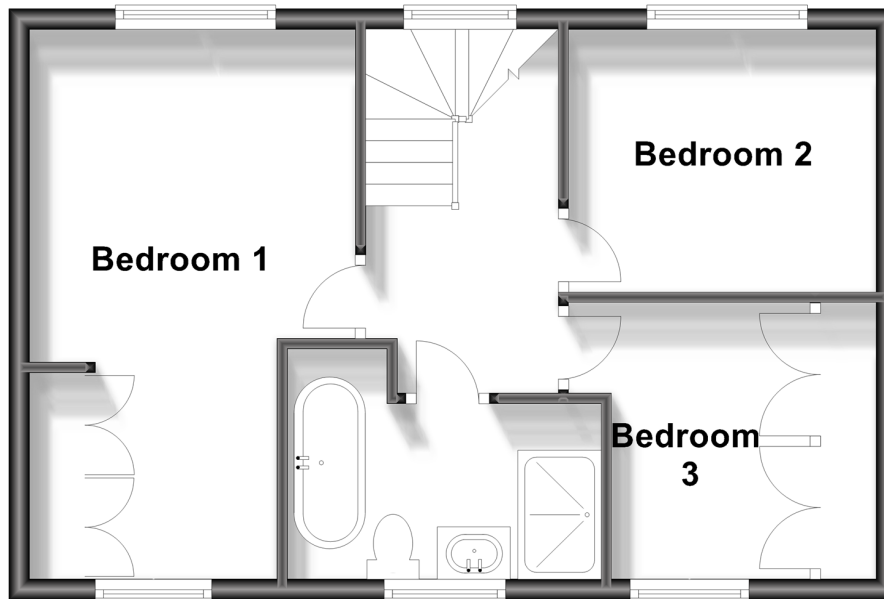
Ground Floor

Approx. 43.5 sq. metres (468.7 sq. feet)



First Floor

Approx. 42.7 sq. metres (459.2 sq. feet)



Accommodation

GROUND FLOOR

Entrance Hall

Lounge: 20'8 x 9'7 (6.30m x 2.92m)

Kitchen/Dining Area: 17'0 x 12'6 (5.19m x 3.81m)

FIRST FLOOR

Landing

Bedroom 1: 17'2 maximum x 10'3 maximum (5.24m x 3.13m)

Bedroom 2: 9'9 x 8'3 (2.97m x 2.52m)

Bedroom 3: 8'5 x 6'3 up to fitted wardrobes (2.57m x 1.91m)

Bathroom: 10'0 x 7'0 (3.05m x 2.14m)

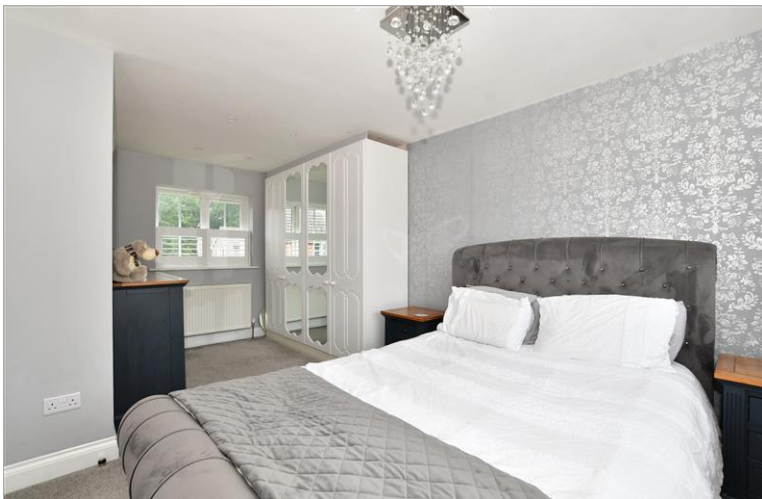
OUTSIDE

Front, Side & Rear Garden

Off Road Parking for 1 Car

Garage: 17'0 x 8'0 (5.19m x 2.44m)

Store/Utility



Main features

- An immaculate house set in a quiet & exclusive cul-de-sac
- Refitted kitchen/dining area with built-in appliances
- Double glazing, new gas combination boiler
- Corner position with large garden driveway and detached garage/store/utility
- Great location, short walk to superb schools and local shops. A lovely family home



Nearest Schools

Primary Schools: Sandcross School 1.0 miles, Reigate Priory Community Junior School 1.6 miles, St John's Primary 1.6 miles
Secondary Schools: Reigate School 0.7 miles, Cornfield School 1.3 miles, St Bede's School 2.3 miles



Transport Information

Train Stations: Earlswood 2.0 miles, Salfords 2.3 miles, Reigate 2.4 miles, Redhill 2.4 miles



Address

Nuthatch Gardens, Reigate, Surrey, RH2



Directions

For directions to this property please contact us.



cubitt&west
Helping you move forwards

Call Reigate Branch 01737 222020 ■ cubittandwest.co.uk



■ Legal advice should be taken to verify fixtures/fittings, planning, alterations and/or lease details ■ Appliances & services are untested, dimensions are approximate and floor plans are not to scale
■ Through a Homewise Home For Life Plan people aged 60+ can secure this property for up to 59% less, by purchasing a Lifetime Lease.



21613141/20240502/JB1/JB1