



Guide Price
£600,000

Freehold

3x  1x  2x 

**Hitchings Way, Reigate,
Surrey, RH2**

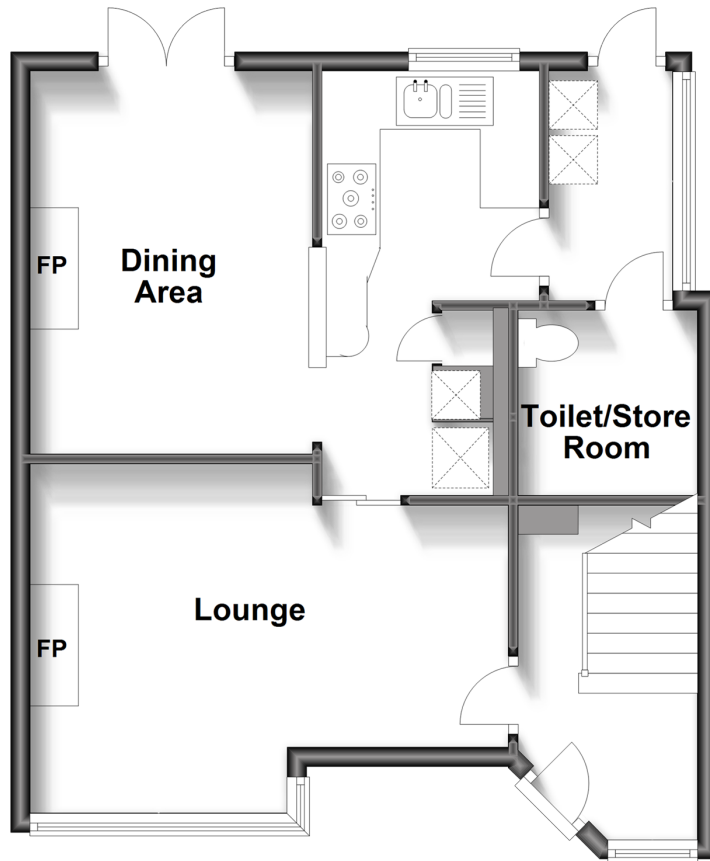
OVER 60?

Secure this property
for up to **59% less!**

cubitt&west
Helping you move forwards

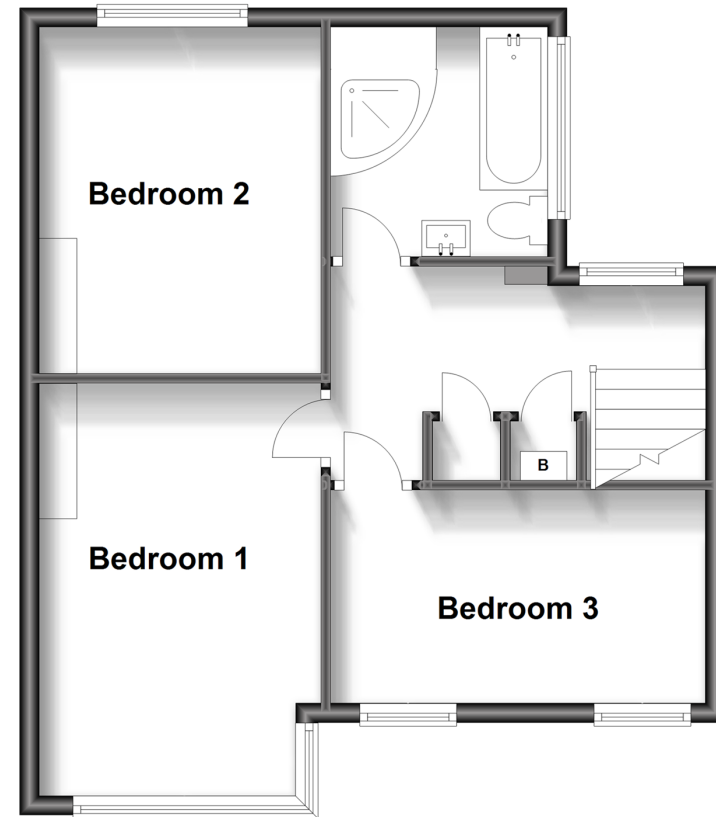
Ground Floor

Approx. 51.4 sq. metres (553.2 sq. feet)



First Floor

Approx. 46.4 sq. metres (499.2 sq. feet)



Accommodation

GROUND FLOOR

Entrance Hall: 10'5 x 6'0 (3.18m x 1.83m)

Lounge: 16'3 maximum x 12'1 maximum (4.96m x 3.69m)

Dining Area: 13'0 x 10'0 (3.97m x 3.05m)

Kitchen: 14'0 x 7'9 (4.27m x 2.36m)

Side Lobby: 9'0 x 4'2 (2.75m x 1.27m)

Toilet /Store Room: 6'3 x 6'1 (1.91m x 1.86m)

FIRST FLOOR

Landing

Bedroom 1: 13'8 x 10'0 (4.17m x 3.05m)

Bedroom 2: 12'2 x 10'0 (3.71m x 3.05m)

Bedroom 3: 12'5 x 7'2 (3.79m x 2.19m)

Bathroom: 7'6 x 7'6 (2.29m x 2.29m)

OUTSIDE

Parking for 2 Cars

Rear Garden



Main features

- A superb fully refurbished & very spacious house
- High quality fitted kitchen & luxury bathroom
- Tasteful decoration, wooden floors, 3 genuine double bedrooms
- Enclosed rear garden, parking for 2 cars
- Close to excellent schools of all grades, local shops, Priory Park & town centre



Nearest Schools

Primary Schools: Sandcross School 0.5 miles, Reigate Priory Community Junior School 1.1 miles, St John's Primary 1.1 miles
Secondary Schools: Reigate School 0.4 miles, Dunottar School 1.0 miles, Reigate Grammar School 1.1 miles



Transport Information

Train Stations: Earlswood 1.3 miles, Reigate 1.5 miles, Salfords 2.0 miles, Redhill 2.7 miles



Address

Hitchings Way, Reigate, Surrey, RH2



Directions

For directions to this property please contact us.



cubitt&west
Helping you move forwards

Call Reigate Branch 01737 222020 ■ cubittandwest.co.uk



■ Legal advice should be taken to verify fixtures/fittings, planning, alterations and/or lease details ■ Appliances & services are untested, dimensions are approximate and floor plans are not to scale
■ Through a Homewise Home For Life Plan people aged 60+ can secure this property for up to 59% less, by purchasing a Lifetime Lease.



21613161/20230601/NF1/JB1