



**Price**

**£170,000**

**Leasehold**

1x  1x  1x 

**Ridings Court, Prices  
Lane, Reigate, Surrey,  
RH2**

**cubitt&west**  
Helping you move forwards





## Main features

- An immaculate retirement apartment for the over 60's, with lift access
- Modern fitted kitchen with built-in appliances, refitted shower room
- Electric heating & double glazing
- Views over communal gardens
- Resident lounge, laundry & parking, 24 hour care line, on site Manager
- No onward chain

## Accommodation

### FIRST FLOOR

#### Entrance Hall

Lounge/Diner: 19'1 maximum x 12'0 maximum (5.82m x 3.66m)

Kitchen: 10'3 x 6'0 (3.13m x 1.83m)

Bedroom : 13'3 maximum x 9'0 maximum (4.04m x 2.75m)

Shower Room: 7'0 x 6'0 (2.14m x 1.83m)

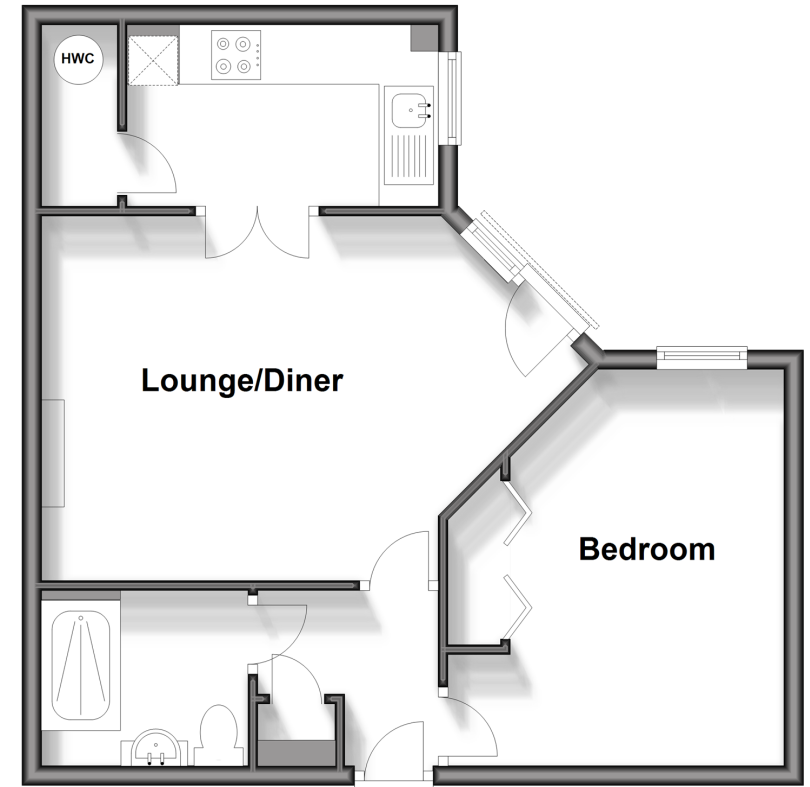
### OUTSIDE

#### Communal Gardens

#### Resident & Visitor Parking

## First Floor

Approx. 45.8 sq. metres (493.1 sq. feet)



**Call Reigate - 01737 222020 ■ [cubittandwest.co.uk](http://cubittandwest.co.uk)**

- Legal advice should be taken to verify fixtures/fittings, planning, alterations and/or lease details
- Appliances & services are untested, dimensions are approximate and floor plans are not to scale



21613177/20240501/NF1/JB1