



**OVER 60?**

Secure this property  
for up to **59% less!**

**Price**

**£495,000**

**Freehold**

3x  1x  2x 

**Harrison Close, Reigate,  
Surrey, RH2**

**cubitt&west**  
Helping you move forwards



## Main features

- An immaculate mid-terraced house, no chain
- Open plan kitchen/dining area with built-in appliances, modern bathroom & cloakroom
- Gas central heating & double glazing
- Private rear garden
- Short walk to town centre, train station & schools

## Accommodation

### GROUND FLOOR

Entrance Hall

Lounge: 16'4 x 14'8 (4.98m x 4.47m)

Kitchen/Dining Area: 18'0 x 13'0 (5.49m x 3.97m)

Cloakroom

### FIRST FLOOR

Landing

Bedroom 1: 14'7 x 10'7 (4.45m x 3.23m)

Bedroom 2: 12'6 x 10'8 (3.81m x 3.25m)

Bedroom 3: 8'7 x 7'0 (2.62m x 2.14m)

Bathroom: 6'8 x 6'6 (2.03m x 1.98m)

### OUTSIDE

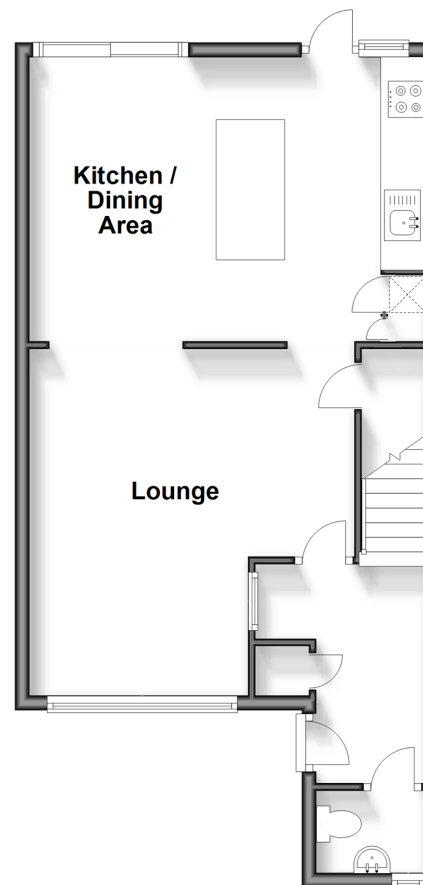
Front Garden

Store

Rear Garden

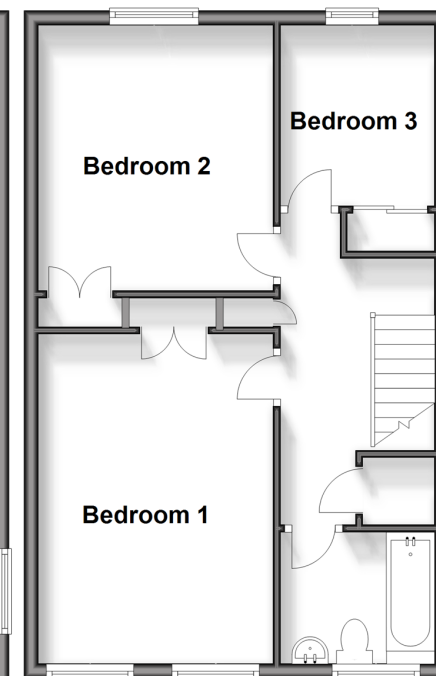
### Ground Floor

Approx. 560.6 sq. feet



### First Floor

Approx. 522.7 sq. feet



**Call Reigate - 01737 222020 ■ [cubittandwest.co.uk](http://cubittandwest.co.uk)**

- Legal advice should be taken to verify fixtures/fittings, planning, alterations and/or lease details
- Appliances & services are untested, dimensions are approximate and floor plans are not to scale
- Through a Homewise Home For Life Plan people aged 60+ can secure this property for up to 59% less, by purchasing a Lifetime Lease.



21613226/20240424/JB1/JB1