



Price
£365,000

Leasehold

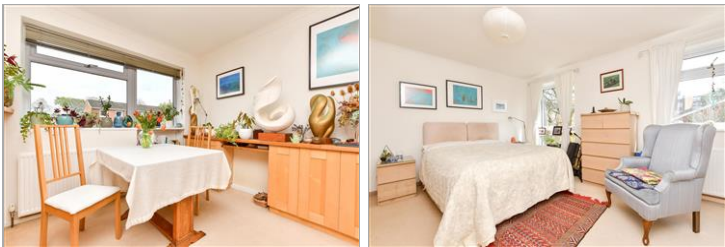
2x  1x  1x 

**Harrison Close, Reigate,
Surrey, RH2**

OVER 60?

Secure this property
for up to **59% less!**

cubitt&west
Helping you move forwards



Main features

- Bright & airy split level maisonette in very good decorative order
- Set within a quiet residential cul-de-sac
- Walking distance to the town, restaurants, public transport, Priory Park and excellent local schools
- Gas central heating & double glazed
- Off street parking & garage-en-bloc

Accommodation

FIRST FLOOR

Entrance

Lounge: 13'7 x 13'4 (4.14m x 4.07m)

Kitchen/Dining Area: 17'2 x 9'9 (5.24m x 2.97m)

SECOND FLOOR

Landing

Bedroom 1: 13'4 x 12'4 (4.07m x 3.76m)

Bedroom 2: 10'2 x 9'9 (3.10m x 2.97m)

Bathroom: 6'6 x 6'6 (1.98m x 1.98m)

OUTSIDE

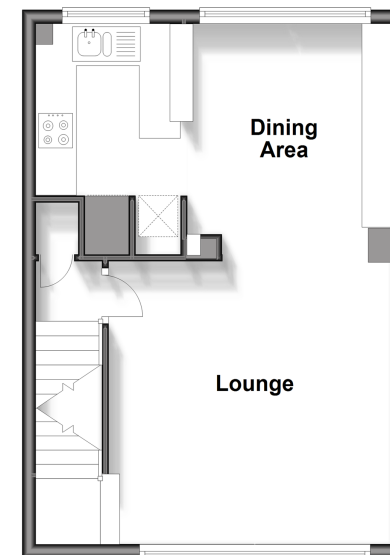
Off Road Parking

Garage-en-Bloc

Communal Garden

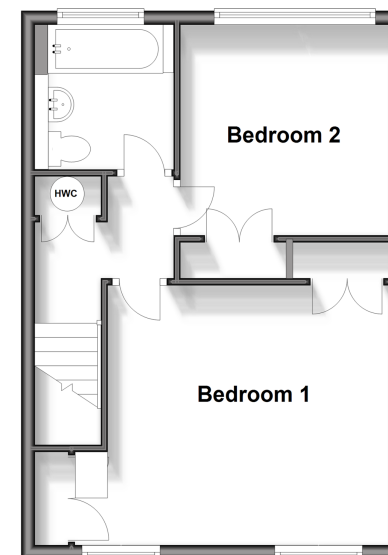
First Floor

Approx. 39.4 sq. metres (424.4 sq. feet)



Second Floor

Approx. 39.5 sq. metres (424.8 sq. feet)



Call Reigate - 01737 222020 ■ cubittandwest.co.uk

- Legal advice should be taken to verify fixtures/fittings, planning, alterations and/or lease details
- Appliances & services are untested, dimensions are approximate and floor plans are not to scale
- Through a Homewise Home For Life Plan people aged 60+ can secure this property for up to 59% less, by purchasing a Lifetime Lease.



21613312/20240427/NF1/KH