



**Price**

**£290,000**

**Leasehold**

3x  1x  1x 

**Silchester Court, London  
Road, Thornton Heath,  
Surrey, CR7**

**OVER 60?**

Secure this property  
for up to **59% less!**



Video Tour available

**cubitt&west**  
Helping you move forwards





## Main features

- **Spacious third floor flat in a convenient location**
- **Communal grounds and balcony**
- **Large lounge**
- **Lift to all floors**
- **Easy access to transport and all local amenities**

## Accommodation

### THIRD FLOOR

Entrance Hall

Lounge: 14'8 x 11'11 (4.47m x 3.63m)

Balcony

Kitchen: 10'6 x 6'6 (3.20m x 1.98m)

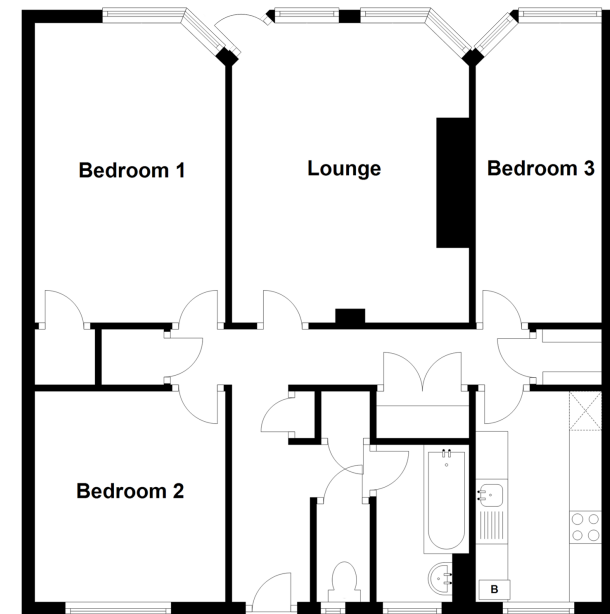
Bedroom 1: 14'8 x 9'9 (4.47m x 2.97m)

Bedroom 2: 10'6 x 9'8 (3.20m x 2.95m)

Bedroom 3: 14'6 x 6'6 (4.42m x 1.98m)

Bathroom

**Third Floor**  
Approx. 77.3 sq. metres (832.3 sq. feet)



**Call Shirley - 020 8654 3037 ■ cubittandwest.co.uk**

- A private rental licensing scheme applies to some properties in this area, please contact us before proceeding
- Appliances & services are untested, dimensions are approximate and floor plans are not to scale

- Legal advice should be taken to verify fixtures/fittings, planning, alterations and/or lease details
- Through a Homewise Home For Life Plan people aged 60+ can secure this property for up to 59% less, by purchasing a Lifetime Lease.