



Guide Price
£350,000

Freehold

2x  1x  1x 

**Parker Road, Croydon,
Surrey, CR0**

OVER 60?

Secure this property
for up to **59% less!**

cubitt&west
Helping you move forwards



Main features

- **Fantastic mid-terrace house in an ideal location**
- **Spacious lounge/diner**
- **Separate kitchen leading onto the rear garden**
- **Upstairs bathroom**
- **Conveniently situated close to transport and shops**

Accommodation

GROUND FLOOR

Entrance Porch

Lounge/Diner: 25'4 x 10'1 (7.73m x 3.08m)

Kitchen: 11'0 x 9'7 (3.36m x 2.92m)

FIRST FLOOR

Landing

Bedroom 1: 10'4 x 10'1 (3.15m x 3.08m)

Bedroom 2: 9'0 x 8'11 (2.75m x 2.72m)

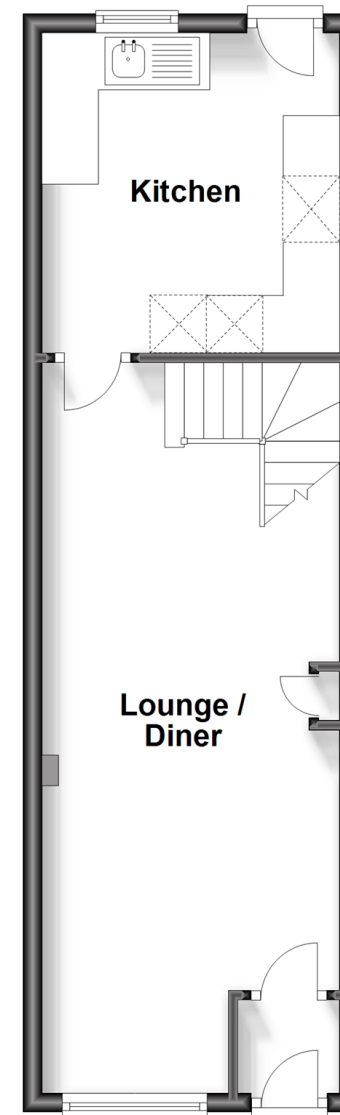
Bathroom

OUTSIDE

Rear Garden

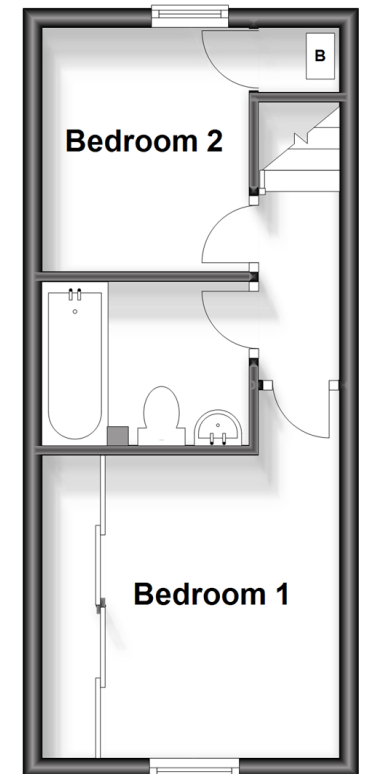
Ground Floor

Approx. 35.0 sq. metres (376.4 sq. feet)



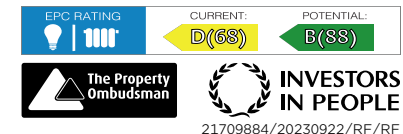
First Floor

Approx. 24.1 sq. metres (259.4 sq. feet)



Call Shirley - 020 8654 3037 ■ cubittandwest.co.uk

- A private rental licensing scheme applies to some properties in this area, please contact us before proceeding
- Legal advice should be taken to verify fixtures/fittings, planning, alterations and/or lease details
- Appliances & services are untested, dimensions are approximate and floor plans are not to scale
- Through a Homewise Home For Life Plan people aged 60+ can secure this property for up to 59% less, by purchasing a Lifetime Lease.



21709884/20230922/RF/RF